

£5.00 | Free to members

MAGAZINE OF The Friends of Westonbirt Arboretum



Westonbirt

SPRING/SUMMER 2020



Our place in a
changing world

Our vision for the future

Wild seed adventures in Japan

Going for green

Support a square



E18 Main Drive
'Spring dream'
Gentle strolls along this path during spring brings back special memories.



D11 Acer Glade
'Our favourite picnic spot'
Plenty of family picnics have been enjoyed under this canopy of acer leaves.

What special place will you choose?

Supporting a square is a wonderful way to help Westonbirt Arboretum. Dedicate a square to your own special memories or make it a gift for friends or family.

For **£25 a year** you can support a square to celebrate, commemorate or just show your support.

- Choose your spot on our interactive map
- Add your message or memory
- Buy online
- Your message will be displayed on our website and you will receive a confirmation email

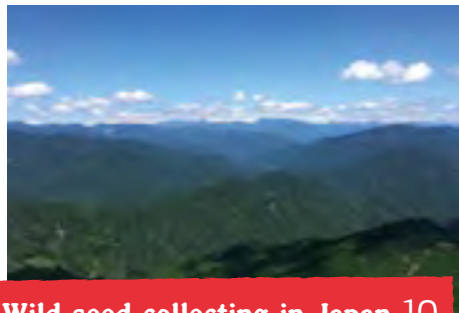
To sponsor your square visit
fowa.org.uk/supportasquare

Our biggest expansion in 200 years	5
Events	12
Going for 'green'	16
A birch tree to be proud of	18
Spring & summer in the arboretum	20
Chalara ash dieback	22
Spring & summer tree highlights	24
What it's like to be a Community Volunteer	30
Family fun	34
A shelter in the making	38
Keeping ancient traditions alive	39
How the sound of music helps the arboretum	40
News	42
Annual General Meeting	45
Membership benefits	46
The beauty of mindful photography	49
Friends of Westonbirt Arboretum Team	51

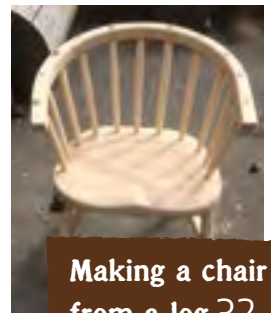
Features



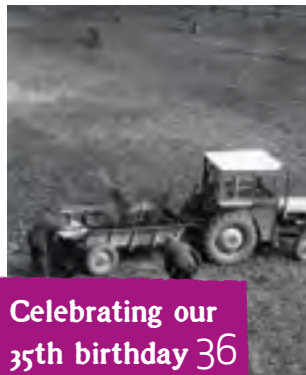
Our vision 6



Wild seed collecting in Japan 10



Making a chair from a log 32



Celebrating our 35th birthday 36



A day in the life of Visitor Services 48

the friends
of Westonbirt
Arboretum



Westonbirt

Issue 116, Spring & summer 2020:
March – August
© Friends of Westonbirt Arboretum.
Reg. Company 4965522
Reg. Charity No. 293190

Friends of Westonbirt Arboretum,
Tetbury, Glos. GL8 8QS.

Tel. 0300 067 3300

Cover image:
© Johnny Hathaway

Design:
Oyster Marketing and Design
www.oysterdesign.co.uk

Print:

Stephens & George
stephensandgeorge.co.uk

Printed on Woodforce, sourced
from responsibly managed
forests. Mailed in recyclable
FSC material.

Editorial team:

Jane Shute
Rebecca Hare
Alison Cobb
Jo Murray

Views expressed in the
Westonbirt magazine are
not necessarily those of
the Friends of Westonbirt
Arboretum or Forestry England.
Every effort is made to check
factual accuracy, but no
guarantees are expressed or
implied. In particular, readers
should satisfy themselves
about the authenticity of
products advertised.

Sharing a dynamic vision



Today, in partnership with Forestry England, we are sharing the 10-year vision for Westonbirt Arboretum in response to the growing challenges of our changing world.

The key pillars of our vision are highlighted over the next few

pages and focus on our core commitments towards conservation, education and participation. These pillars align with the charitable objectives of the Friends of Westonbirt Arboretum to enable us to move forwards as a charity in close partnership with Forestry England.

To enable the realisation of the vision our big news this year is the purchase of the Silk Wood House estate next door, giving us the space to develop our master plan. This acquisition has only been possible thanks to your membership donations, which have contributed £750K to this once-in-a-generation opportunity.

To provide additional support, in February 2020 the Friends of Westonbirt Arboretum also took over the running of the gift shop at the arboretum, with the profits going to support projects on site, so please support us and share your ideas of how we can best develop it.

As you will have seen in the last edition of the magazine, one of the first projects to support the new vision is the Quarantine House which allows us to expand our biological controls. Thank you to those who have already given and, in advance, to those who are intending to do so.

Finally, I would like to invite you to attend our annual AGM held in the Great Oak Hall on Wednesday 20 May at 6pm, giving you the chance to influence our future.

Mike Coe

Friends of Westonbirt Arboretum, Chief Executive

Being a world leader



Launching our vision to be 'a world leader in trees, inspiring people through conservation, education and participation' is a bold statement of our ambition for the arboretum. The

importance of our work here at the arboretum was reinforced in 2019, when we saw a rise in the awareness of the impacts of climate change, the threats that trees face, the impacts on human well-being and the role trees can play in alleviating these problems.

We have already taken great steps in realising this vision with the purchase of the adjacent Silk Wood House in September last year.

When the previous owners of the property approached us with the proposal that the arboretum purchase Silk Wood House, I was delighted that the Friends of Westonbirt Arboretum trustees and Forestry England colleagues were so supportive. This is a substantive vote of confidence by both parties in our vision. The purchase was only possible thanks to the ongoing support of our large membership base.

The new property opens up many exciting possibilities, within both our existing boundaries and the new footprint. We are embarking on a significant planning exercise likely to take two years to work out how best to take forward our work so that we can achieve our vision. There will be opportunities for people to participate and contribute their ideas to help shape our future. Keep an eye out in future issues for opportunities to have your say on the future of The National Arboretum.

Andrew Smith

Forestry England, Arboretum Director



Westonbirt Arboretum expands for the first time in 200 years!

▲ View of Silk Wood House.
Credit: Jan Bayley

In September last year Forestry England, supported by the Friends of Westonbirt Arboretum, purchased Silk Wood House, a 29 acre property adjacent to the arboretum. This means that for the first time in 200 years, the arboretum has expanded; something that hasn't happened since the 1840s, when Robert Holford, our founder, purchased Silk Wood.

This is a rare and exciting opportunity, for which there is no shortage of ideas as to what the future of the property should be. Over the next two years, we will take a close look at the current facilities and layout of the arboretum and Silk Wood House to decide how we can best use this opportunity to connect people with trees. We will also, of course, be asking staff, volunteers, our local community and our members what their thoughts and aspirations are for the future of the arboretum.

Although the property was never part of the original Victorian estate, it was purchased in the 1920s by an American lady, who built two semi-detached houses for her chauffeur/gardener and housekeeper. Later these two houses were converted into one larger building. Although it was her original intention to build a larger house for herself closer to the arboretum, this never happened, as she found that the British climate wasn't to her liking. The property then passed through a series of owners until being purchased by the previous owners, who lived in the house for over 30 years and brought up their family there.

Watch this space for more info on this exciting opportunity!



▲ The property includes a stone building, three grass fields and a series of outbuildings. Credit: Jan Bayley

Our vision

To be a world leader in trees, inspiring people through conservation, education and participation.

Our trees are becoming ever more threatened through climate change, disease and human intervention. The time to act is now – we need to address these threats.

We are sharing our vision for Westonbirt with you, our members. You will play a vital role in driving forward the projects to deliver our key commitments through your donations and advocacy towards our cause.

The following pages highlight some of the outcomes from within the vision document that we aspire to as The National Arboretum.

The full version can be viewed on our charity website fowa.org.uk/vision

The next 10 years

Our 10-year vision is centred on three key themes – conservation, education and participation.

By studying and conserving our trees, sharing our knowledge and encouraging more people to engage with The National Arboretum, we can improve understanding of our natural assets, communicate the important role they play to all life on earth and get more people benefitting from the positive impacts on health and well-being. It's about strengthening the connections between people and trees and the next 10 years are key to making that happen.





Conservation:

Protecting our trees for the future

The challenge

The world's leading climate scientists have warned that there is only a decade left to change our behaviours and prevent a climate catastrophe. Trees will play a vital role in the solution to this challenge. At Westonbirt, within our living collection of 15,000 specimens, we have over 100 different species that are classified as threatened and in need of conservation. Unfortunately, native and non-native tree species alike may have little tolerance or resistance to fight against pests and diseases. Together with a changing climate, we will anticipate threats as evolving challenges that we will strive to overcome over the next decade.

Over 100

different species at Westonbirt are classified as threatened and in need of conservation.

Our response

Westonbirt will become an internationally recognised base for scientists to improve and expand our knowledge. We will work with national and international partners to tackle the difficult global challenges our changing world poses to trees and the ecosystems they support.

By predicting what the future may hold, we will identify species adapted to climate change and determine how to protect the trees we already have. To do this, we will work to improve our facilities and skills to enable us to conserve, develop and utilise our unique collection and share our knowledge widely.

A new centre of science and learning will make use of our 'living classroom' and include flexible facilities to host this collaborative work and share the importance and wonder of trees with everyone. To allow this transformation we will look to acquire new land around Westonbirt, when the opportunity arises, to grow our capacity.

We will also build an understanding of the value and importance of the collection we care for, taking radical action to improve our on-site sustainability.

“ The world’s response to climate change – in terms of adaptation, mitigation and resilience – must focus more on forests. ”

Food and Agriculture Organization
The State of the World's Forests 2018





▲ Credit: Johnny Hathaway



Education: Sharing knowledge to create change

The challenge

In an increasingly urban and technologically advanced society, people are becoming more and more disconnected with the natural environment. As this change happens, they start to lose appreciation of all the critical environmental and social benefits our trees offer. With this loss of appreciation, people are less able to act to support the environment and trees.

“ Young people who spend time outdoors and forge a connection with the natural world are more likely to become environmentally-aware adults. ”

Botanic Gardens Educational Network

Our response

Westonbirt is a great place to visit – and it’s the perfect setting to learn about our natural environment. By developing innovative activities and events within our new learning facilities we will challenge and inspire people to engage with the environment. We will lead the conversation about trees, their role in society and how we can all secure their future.

And our activities will be for everyone – from the youngest visitor through all life stages to create future leaders, volunteers and members to support our cause. We will also increase our links with academic institutions, enabling them to use the arboretum to apply and translate their research in the real world and communicate this to our visitors.

Over the next decade, we will also develop a visitor experience that engages through interactivity and a new focus on the arts. It’s about creating exciting and enlightening experiences that everyone – from our visitors to research partners – can learn from and be inspired by.



Participation:

Connecting people with nature

The challenge

In our changing world there is increasing concern that growing sections of society can't, or don't, access natural environments like Westonbirt. They are missing out on the social and natural benefits they provide. With strong evidence linking the benefits of contact with nature on health and well-being, this needs to be addressed. Reduced access to trees can limit society's ability to live in a sustainable way, unable to understand the future challenges we all face.

Our response

Westonbirt has so much green space, flora and fauna, and we are perfectly placed to boost inclusive participation. We have already done so much, but we will continue to do more to improve access for those groups in most need, forging stronger links with our community partners. We will make sure that people are better able to experience our natural environment through a variety of media, connecting with our trees to improve their mental health and well-being.

Our staff and volunteers are committed to learning and sharing their knowledge with visitors, making every interaction an inspiring one by developing a broader range of talks, tours and interpretation. We will empower people to participate in our development to help shape our decisions.

We will make significant improvements to our outdoor spaces, ensuring they are designed for the needs of all. Our visitor welcome will inspire people to connect with the natural environment, understand the arboretum and join as members in lifelong support of our cause.

We will remodel and expand our central facilities – including café, commercial, exhibition and natural play areas, while continuing to showcase the work of the arboretum. Through this, we will create a more immersive visitor experience.

This will promote happier, healthier lives while conserving our thriving heritage for generations to come.

You can read the full version of our vision document on our charity website fowa.org.uk/vision



▲ Credit: Suzy Gardiner

Wild seed collecting in Japan

An experience of a lifetime



In September 2019 I was delighted to take part in a wild seed collecting expedition to Japan, in collaboration with the University of Oxford Botanic Garden and Arboretum (OBGA) and Bedgebury National Pinetum.

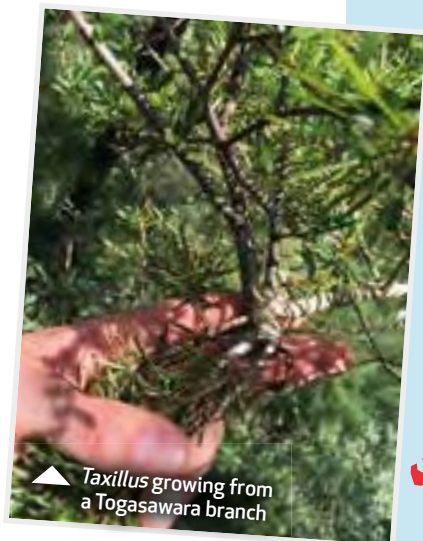
By Cairn Hurst, Arborist, Forestry England Westonbirt Arboretum

Led by Ben Jones, Arboretum Curator at OBGA, and accompanied by Guy Horwood, Senior Arborist OBGA, and Dan Luscombe, Collections Manager, Bedgebury National Pinetum, the trip's main focus was on conifer conservation with a particular focus on conifer species assessed as either Critically Endangered (CR) or Endangered (EN) on the International Union for Conservation of Nature (IUCN) Red List of Threatened Species. The plant material collected was for living conservation collections at partner organisations and seed banks in Japan and the Millennium Seed Bank, UK.

We also collected important survey data; altitude, aspect, soil type, associated species; and took digital images to enhance the conservation value of our collections. This data will greatly strengthen knowledge of the plants on public display across Westonbirt and partner organisations.

I was there primarily for my tree climbing expertise; collecting seed from the canopy of trees too high to reach from the ground. Not long into the trip I had my first foreign tree climbing experience on Shikoku; one of Japan's five main islands. The tree was *Pseudotsuga japonica* (Japanese douglas-fir) or Togasawara as it's known in Japan. With fewer than 2,000 mature trees growing in two main locations in the wild, Togasawara is classified as Endangered on the IUCN Red List.

Once in the canopy, I collected material from a plant growing from the tree itself. This was identified as *Taxillus kaempferi*; a parasitic plant similar to mistletoe, which feeds off resources produced by its host. Not a good thing for the overall health of the tree, and an unusual find as the host for this species is thought to be *Pinus thunbergii*! We noticed the *Taxillus* in a large proportion of the surrounding population and thought this may have been contributing to the chlorotic colour of several trees we saw. Akiko Ando, Deputy Manager and our guide from Shikoku National Forest Agency, took the material to help with their research on the local Togasawara population.



After our stay on Shikoku, we travelled back to Honshu and north to Toyama, where staff from Toyama Botanic Gardens took us to a collection site on Mount Tateyama. We drove up into the hills through old growth *Cryptomeria* (known as 'Sugi' in Japan), past the largest one on Tateyama – the impressive Sendo cedar – which is over 1,000 years old. The highlight for me was climbing old growth *Thuja standishii*, and while leaning out of the *Thuja*'s canopy, also collecting from a nearby *Cryptomeria japonica*. The old trees really were impressive; massive trunks full of holes, hollows, old wounds and growing in all manner of wonderful shapes! The view of the summit of Mount Tateyama, peeking through the clouds, from +2,500 metres was also pretty special!

“ I'm incredibly proud to have contributed to part of a global conservation programme, and to have helped our friendly Japanese hosts with their valuable research. It was an experience of a lifetime! **”**

Successful collections made during the trip include *Cryptomeria japonica*, *Thuja standishii*, *Betula corylifolia*, *Euonymus oxyphyllus*, *Stewartia pseudocamellia*, and *Lindera triloba*. I'm excited waiting for the next step – helping Penny, our Propagator, germinate some of the seed when it arrives at Westonbirt.

14,500 miles travelled
(including bullet trains and hybrid vehicles)

49 wild seed collections made

Equivalent of 700 flights of stairs climbed

3 praying mantises crawled up my arms!



The expedition team helping with *Pseudotsuga japonica* research. (Back row l-r; Guy Horwood, Dan Luscombe, Cairn Hurst, Ben Jones. Front row; Akiko Ando, Dr. Sakei, Shikoku National Forest Agency.)

Coming up

Welcome to our spring and summer events calendar. We're excited to be holding lots of different activities - there's something for everyone!

Guided walks and tours

The meeting point for walks and tours is in front of the Welcome Building.

Wonders of Westonbirt Guided Walk

Explore the seasonal highlights of Westonbirt's Old Arboretum.

Daily at 11am & 2pm
Free after admission

Special Themed Walks

Discover more about The National Arboretum on a special themed walk. Every Saturday there will be a different walk to delight the senses from going behind the scenes to exploring Silk Wood's secrets. Find out more on our website or on the Guided Walks sign at the Welcome Building.

Every Sat from Mar - Nov, 11.30am

Wildflower Walk

Explore the flora of Westonbirt Arboretum.

First Tue of the month from Apr - Sept at 10.30am
Free after admission

For children and families

Buggy Fit

An opportunity to regain your fitness after having a baby.

Every Fri morning from 10.30am
£5 pay as you go

Tots & Twigs Forest School

The Forest School helps encourage young children (between 2 and 5 years) and supports their parents/carers in helping them to get back to nature with a wildlife focus.

Thu and Fri mornings and afternoons during term time
£80 (£70 for Friends of Westonbirt Arboretum)



Awakening Woods - Discovery Weekend

Discover signs of early spring, look closely at seeds and leaves with our microscopes and make spring-themed crafts to take home.

Sat 21 and Sun 22 Mar (Mothering Sunday weekend), 10.30am - 3.30pm Free after admission

Scent-sational Spring

Join us at our scent-themed discovery table to create a woodland perfume and make scented crafts to take away.

Mon 6 - Thu 9 Apr, 11am - 4pm
Free after admission

Find out more

Visit forestryengland.uk/westonbirt or call Westonbirt Arboretum on 0300 067 4890 to find out more information about any of our events.

Spring Symphony

Take part in our quiz at our discovery sound table and make a simple wooden instrument to take home.

Tue 14 – Fri 17 Apr, 11am – 4pm

Free after admission

Big Forest Find – Discovery Weekend

Join us as we venture out to spot minibeasts in the arboretum. Sweep net in the long grasses, and look under logs.

Sat 9 & Sun 10 May, 11am – 4pm

Free after admission

The ARB Show

An ideal chance for professionals to discover the latest tools and kit while members of the public can enjoy an educational and enjoyable day out celebrating the science of trees.

Fri 15 and Sat 16 May, 9am – 5pm

Tastes of Spring

Take our tree honey taste test, find out more about our woodland fruit pollinators and create bee-related crafts.

Tue 26 – Fri 29 May, 11am – 4pm

Free after admission

Meet the Machines

Find out more about the work of our Tree Team and meet their machines.

Sat 27 & Sun 28 June, 10.30am – 4pm

Free after admission

Forest Live

Rag'N'Bone Man – Thu 11 June

SOLD OUT

James Morrison and Will Young – Fri 12 June

Madness – Sat 13 June

Keane – Sun 14 June

Summer family event programme – Plant Hunters Academy

Join us to discover more about different plant hunters connected to Westonbirt's tree collection. Test your plant hunter skills and have a go at our crafts.

Week 1 – David Douglas, Week 2 – Robert Fortune, Week 3 – Marianne North, Week 4 – Ernest Wilson, Week 5 – Westonbirt's Tree Team.

Mon – Fri, 27 Jul – 28 Aug, 11am – 4pm

Free after admission

Active Forest events

Cani-X

Cani-X is running with dogs in harness that are attached to the runners' waist belts with a bungee lead. Get out with your best friend doing what they love best – running.

Sat 14 & Sun 15 Mar, from 10am

Adult: £18, Child: £10

Tree Climbing

As well as giving you a rush of adrenaline, tree climbing brings you closer to nature and to exploring the natural world.

**Fri 10 Apr, Wed 27 May, Sat 25 Jul,
hourly slots from 10am – 5pm**

£20 plus site admission fee

Westonbirt 10k

SOLD OUT

With a route that takes you past champion trees and some of the rarest species in the world, the Westonbirt 10K certainly isn't your average run!

Thu 7 May, 7pm



Workshops and courses

Spoon Carving

Come and try your hand at this engaging and mesmerising craft of wooden spoon carving.

Sat 7 Mar, Thu 23 Apr, Sun 7 Jun, 10am – 5pm | £75

Needle Felt Workshop

Learn how to make your very own felt animal.

Sat 14 Mar, Wed 22 Apr, Wed 6 May, Sat 6 Jun, Wed 15 Jul, 9.30am – 12.30pm | £30

Willow Sculpture Workshop

Create your very own wonderful willow sculpture in a relaxed and fun environment.

Sat 14 Mar, Sat 18 Apr, Sat 23 May, Sat 13 Jun, Sun 12 Jul, 10am – 4pm | £85

Spring Flower Posy Workshop

Using fresh spring flowers, come and spend a relaxing morning learning how to make a beautiful hand-tied posy.

Sat 21 Mar, 10.30am – 1pm | £65

Windsor Chair Making Course

Create your very own Windsor chair by using traditional skills in the beautiful surroundings of Westonbirt.

Various week-long dates from Apr – Oct, 9am – 5pm | £425

Two Day Willow Sculpture Workshop

Spend time immersed in nature and create something magnificent with full tuition.

Mon 6 & Tue 7 Apr, 10am – 4pm | £160

Beginner's Photography Course

Aimed primarily at the beginner or those who have a digital camera but lack the confidence/knowledge to move away from the Auto Mode setting.

Mon 20 Apr, 10.30am – 3.30pm | £65

Intermediate Photography Course

Develop your photographic skills and understanding with this one day course in the stunning setting of Westonbirt Arboretum.

Mon 27 Apr, 10.30am – 3.30pm | £120

Printing with Leaves

Printing directly from leaves, you will create beautiful botanical designs using the heat press.

Sat 16 May, Sat 11 Jul, 10am – 4pm | £85

Rustic Furniture Workshop

A full day for adults in the lovely woodland setting of Silk Wood Barn making a rustic hazel chair, stool or bench.

Fri 22, Sat 23, Sun 24 May, Fri 19, Sat 20, Sun 21 Jun, Fri 17, Sat 18, Sun 19 Jul, 9.30am – 6pm

£85 for 1 chair or stool (1 person),
£170 for 1 bench (2 persons)

Family Stool and Mallet Making Workshop

Half-day family workshop for adult and child to make a mallet and small stool. Price includes a fire-cooked lunch with the Pyromaniac Chef.

Wed 27 May, 10am – 2pm or 1pm – 5pm | £65

Foraged Colour Workshop

Learn eco-friendly dyeing techniques using a variety of natural fibres and plant materials foraged from Westonbirt Arboretum.

Sat 30 May, 10am – 4pm | £75

Beekeeping for Beginners

Discover the wonders of the beehive and how you can keep your own honey bees at home.

Sat 6 Jun, Sun 7 Jun, Sat 4 Jul, Sun 5 Jul, Sat 1 Aug, Sun 2 Aug, 10am – 5pm | £70

Designing with Trees and Shrubs

On this workshop you will learn how to select trees and shrubs that will enhance your garden and create beauty every month of the year.

Thu 25 Jun, 10am – 1pm | £55

Summer Flower Posy Workshop

Using fresh summer flowers, come and spend a relaxing morning learning how to make a beautiful hand-tied posy.

Sat 4 Jul, 10.30am – 1pm | £65

Planning Planting

Learn how to plan a flower bed for months of colour in this hands-on workshop.

Fri 10 Jul, 10am – 4pm | £95

Coming up in the Great Oak Hall...

Spring 2020 exhibitions & sales

Great Oak Hall 10am – 4pm

Free admission after entry to the arboretum

30% of sales supports the Friends of
Westonbirt Arboretum charity

British Woodcarvers Association (BWA)

“Out of The Woods II”

The Gloucestershire branch of the BWA hosts a sale/exhibition of their members' work. Featuring a mix of carvings by both professional and amateur carvers, prices start from around £20.

Thu 9 – Wed 15 April



Frances Whitman and Jayne Tricker

“The Colours of Light”

As professional artists, Frances and Jayne are united by their love of colour and light and use both on a physical and spiritual level.

Sat 2 – Sun 10 May

www.franceswhitman.com

www.jaynetrickerart.co.uk



Carole Ann Ingram and Gill Harkness

“A Love of Nature” – Watercolours, Jewellery and Enamels

Local artist
Carole returns
for a third year

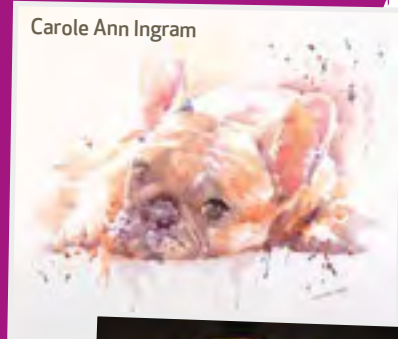
and will be showing an exciting exhibition of watercolour portraits, architecture, nature and wildlife. Bristol-based silversmith, enameller and tutor Gill will be showing unique pieces of tree-influenced panels, bowls and jewellery.

Sat 23 – Sun 31 May

www.caroleaingram.wix.com/artist

www.gillianharkness.com

Carole Ann Ingram



Gill Harkness



Let's celebrate!

Come along and help us celebrate both 20 years since the construction of the Great Oak Hall and 35 years since the founding of the Friends of Westonbirt Arboretum charity.

Events are taking place throughout August. See page 36 for more information and visit fowa.org.uk/celebrations for updates.

Going for 'green'

Behind the scenes at Westonbirt a group of staff and volunteers have formed a 'Westonbirt Green Team'. The team meet regularly to share ideas on how to change individual behaviour, on-site activities and practices to improve our eco-credentials and become even 'greener'!

What is a green team?

A green team is a self-organised group of employees volunteering to educate, inspire and empower others to become eco-friendlier in their workplace and, of course, at home.

Why did we set up a green team?

There's always room for improvement and we saw an opportunity to make a difference. Our staff team already shared the desire to be 'greener' on site. We are all passionate about nature and the environment. The team will now be able to organise and drive this mission forward.

What are we doing at Westonbirt?

Our mainstay of the arboretum is already very green – our trees! However, when you add people, waste and energy-use into the mix, you can begin to see where we impact on the environment. However, we can lessen our impact and aim to co-exist with nature in closer harmony, and that's what we are striving to achieve at Westonbirt.

Recycling food waste through an anaerobic digestion service, using rechargeable batteries and bulk-buying plant-based detergents in our office kitchens are just some of the initiatives we look forward to sharing with you. Our focus on food demonstrates some of the ways we're making changes.



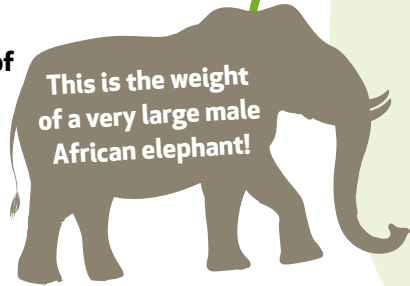
▲ Credit: Jan Bayley

Focus on food

Here are some of the ways we are trying to cut down on waste in our on-site catering.

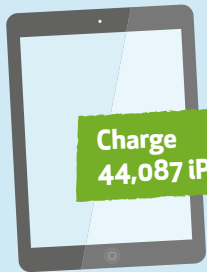
In a single year, over **8.5 tonnes of food waste** were collected from the Westonbirt offices and restaurant!

This is the weight of a very large male African elephant!



So, we currently send the waste to be anaerobically recycled to produce renewable energy and biofertilisers.

We've cut **3.26 tonnes of CO₂** which can:



Charge **44,087 iPads**

Power a hot air balloon ride



Other ways to be 'green' at Westonbirt:

- When you bring your own reusable cup, you receive 30p off hot drinks.
- Our water bottle refilling stations enable you to refill your water bottle at the Welcome Building or restaurant.
- Our volunteers and staff love biscuits, which means we have a lot of wrappers! We're now using a TerraCycle® initiative (reusing unrecyclable materials to make other products and save it from landfill) to raise funds and increase recycling. So far we have collected over 9kgs of crisp packets and 3.3kgs of biscuit and cracker wrappers... that's a lot of snacks!

How our waste is made into renewable energy:

Injected into the national gas grid

4 Biogas produced and upgraded to biomethane

Power vehicles

3 Processed by anaerobic digestion at sewage works

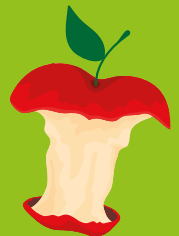
1 Commercial food waste

2 Low emission food waste collections

Facts and acts file

It takes **2 weeks** for an **apple core** to break down in landfill.

ACTION: Put it in your compost bin/food caddy, compost heap or wormery



It can take up to **2 years** for **orange peel** to break down.

ACTION: Put it in your compost bin/food caddy



It takes **75 years** for a **crisp packet** to break down.

ACTION: Look out for a TerraCycle® initiative near you



Once you've read this magazine, please remember to recycle it. Thank you!



A birch tree to be proud of

A fond farewell to a lovely old tree

▲ Credit: Johnny Hathaway

Birch trees do not naturally live for a long time; we are not used to seeing big old specimens. For this reason the champion tree at the entrance to Mitchell Drive (*Betula ermanii x pubescens*) was always a very striking and unusual tree. Its idiosyncratic peeling bark and low-lying perpendicular branches made it a natural first stop on many of our guided walks.

The image below, from the Jackson Catalogue of Westonbirt Trees (published 1927), shows Sir George Holford standing next to an Erman's birch (*Betula ermanii*) planted on Main Drive in 1875 (the tree died in 1946).

We know that many seedlings from this tree were raised and we believe our tree on Mitchell Drive was one of these; a hybrid between the Erman's birch and one of our native downy birches (*Betula pubescens*). This means our tree would have been planted sometime after 1890 and was probably just over 100 years old.



Sadly, one night in September, a large branch fell from this birch and we took the very difficult decision to remove the rest of the tree for safety reasons. We had been monitoring the tree for several years and, although it was known to have decay, it was also growing well. It's always a very delicate balance between allowing our trees to grow old gracefully and keeping our visitors safe. Ultimately visitor safety always comes first and the tree's proximity to a major path meant we had to remove it.

A tree for the future

As far back as the 1930s we have evidence that staff would graft important trees to ensure the genetic legacy of the collection. An entry in the 1936 planting book states how they planted an *Acer palmatum* "home-grafted from the fine colouring form at Acer Corner". Luckily in 1980 the staff decided the hybrid birch should be grafted and the resulting genetically identical tree was planted just to the left of the original tree. Almost 40 years old now, this tree has many of the traits of the original, the peeling bark and characteristic limbs – who knows what it will look like when it is 100? It also offers the option to collect more material from it and graft new trees for other areas of the arboretum.

New roots

Over the years, seeds have been collected from the original tree. While the trees grown from these seeds will not be genetically identical, there is the possibility that they will be even more spectacular than their parent. Currently, the best of these 'seedlings' is a birch growing by the walkway, opposite Westonbirt Woodworks (map reference J20) planted in 1997.

When one tree dies it sometimes creates a new and unexpected vista. In this area of Mitchell Drive, the removal of the birch has opened up the view of a beautiful cut leaved beech that has been mostly hidden before now. Next time you take a walk down Mitchell Drive, take a look at its unusual leaves and impressive form.

Why not join one of our guided walks and discover more about our tree collection? Find more information on our guided walks and tours on page 12.



▲ The Tree Team removing limbs from the champion birch.



▲ Information for visitors.



▲ Our younger birch tree.



Spring & summer in the arboretum

After a long wet, chilly winter, the Northern Hemisphere finally tilts us back towards the sun. Days are getting longer and with the warmer weather animals and plants begin to emerge. It's a busy time of growth and reproduction, a time when nature displays its full magnificence at Westonbirt.

That joyful commotion of the dawn chorus is at its most vocal between March and July as male songbirds sing to defend their territories and invite females to mate. Blackbirds, robins, wrens and great tits are some of the early season singers. Among migrating birds arriving from abroad, the distinguished two-tone songs of the nightingale and cuckoo signal summer is underway.

“First morning light falls softly on fresh spring dew dripped grass and shining blades a million swords cry daybreak from the night.”

Anon



Grass snake

Among the many creatures to stir from their winter slumber is the grass snake; a shy, harmless native resident of our woodlands.

Growing up to one and a half metres, the grass snake is the UK's longest snake. It is a protected species, emerging from winter hibernation in early spring. They are accomplished hunters of small mammals, birds, small amphibians and even fish. Often found near ponds, the grass snake spends a lot of time basking in the warm sunshine to heat up.

Grass snakes tend to be green in colour with a yellow and black collar and dark marks along their sides. The female lays up to 40 eggs, often in compost heaps. She will incubate them until the young emerge early in the autumn.

Buzzard

The sight of a buzzard soaring magnificently through the sky is a common sight above many UK woodlands.

Fighting their way back from persecution and pesticides, the buzzard became a protected species and has quadrupled in number since the 1970s. Distinguished by its broad rounded wings, short tail, white breast under a typically brown head and mottled white wings, the buzzard hunts prey from rabbits to earthworms!



We love knowing what you've discovered on your visits to the arboretum, so please do share your wildlife sightings with us on Instagram using #FriendsofWestonbirt or email us at magazine@fowa.org.uk

Chalara ash dieback

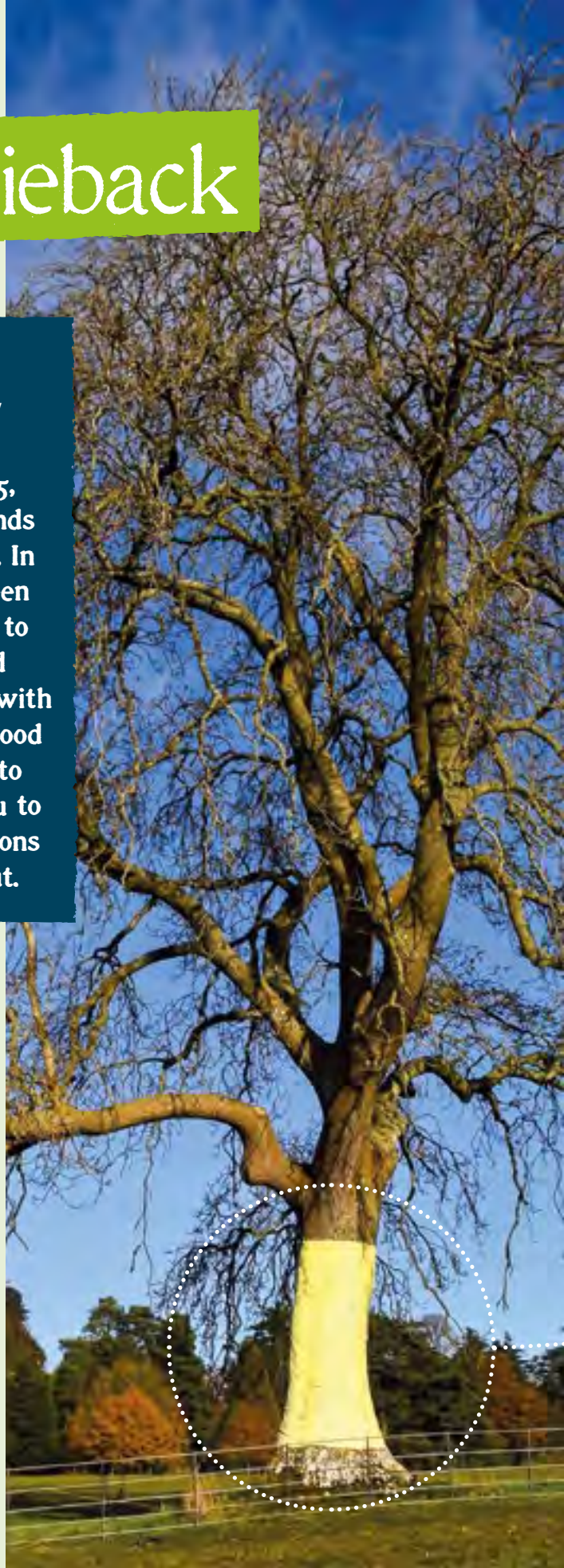


Project update by
Andy Bryce, Collections Manager,
Forestry England

Since confirmation of ash dieback in 2015, we have actively monitored our woodlands to determine the extent of the infection. In the past year, the rate of decline has been noticeable and we have worked quickly to remove infected trees close to paths and rides. The Tree Team have safely dealt with a large number of trees ensuring Silk Wood remains open to visitors as we move onto the next stage of the project. Thank you to everyone for following signs and diversions whilst this important work is carried out.

Working closely with colleagues in Forest Research, a Woodland Management Plan has been drafted to determine how we ensure Silk Wood remains wooded for the foreseeable future. This will also demonstrate how we will meet UK Forestry Standards in terms of social and environmental objectives as well as recognising threats from climate change, pests and pathogens.

The intricate path network within Silk Wood creates small compartments; these are ideal to demonstrate a variety of approaches to woodland management in light of ash dieback. Even areas of non-intervention will form part of the process and this will allow us to see what nature does compared to actively managed areas.





Dark lesions on the bark of the tree is a sign of chalara infection.

You may have noticed these wraps around our ash trees last autumn – these wraps formed part of our autumn trail, and were used to highlight the amount of ash in the woodland and the scale of the challenge we could face if we do not take action.

An important part of the project is the re-stocking of trees, where required, after any necessary felling has taken place. Although the dominant species are ash and field maple, our surveys show that a host of other species exist within pockets; cherry, elm, oak and small leaved lime. Existing trees, including any ash that show signs of natural resistance, will provide a seed bank to help the woodland regenerate from existing populations. Natural regeneration by itself, however, does not ensure resilience for a future climate. This is where careful decisions will be made through enrichment planting. By building in a capacity to deal with predicted climate change along with known pests and pathogens, we can help ensure the woodlands remain healthy and grow.

A great example of the work carried out here at Westonbirt is a recent collection of broad leaved lime (*Tilia platyphyllos*) from several locations throughout Italy. This species is also native to South West England and, by enrichment planting with these southerly provenances, we can monitor how well they establish within the woodland alongside a palette of other broad leaved woodland species.

As part of the project, there has been some impressive interpretation highlighting ash dieback to our visitors and there have been some wonderful and heart-felt responses. For me this goes a long way to show understanding of the effects that pests and pathogens are having on trees and woodlands across the UK, not just at Westonbirt.

Before my next article in autumn 2020, we will have made public the exact plans for Silk Wood, including what work will be carried out and where. We will also explain how you can get involved to make sure Silk Wood remains wooded for future generations.

Look out for the next update in the autumn/winter 2020 Friends of Westonbirt Arboretum magazine.



Spring & summer tree highlights

Plants from the Southern Hemisphere

Discover some of our seasonal highlights featuring trees from the Southern Hemisphere. Over the spring and summer months there are some incredible transformations all around the arboretum as trees embrace the warmer weather and put on a wonderful display of colours, flowers, delicate branch networks and beautiful weaving canopies that soak up the summer sunshine. Don't miss this wonderful time of year at Westonbirt.

▲ Credit: Hugh Angus



Seasonal trail map

You can use this pull-out map to identify and locate where each of the trees in the highlights article can be found in the arboretum.

Each tree has a coloured dot next to it. You will find the same coloured dot placed on the map to show its location. You may wish to take the full article on your next visit.

The map is a simplified version of our main map. We've done this to make finding the tree easier. If you would like a copy of the full map, simply pop into the Welcome Building on your next visit.

Pull out map

● The coloured dots mark some of the spectacular trees worth seeking out on your next visit...



Use our Arboretum Explorer

Arboretum Explorer is a web based search facility that enables you to locate specific trees at Westonbirt. You can use as much or as little information as you have and the website will show you a map with the location of the tree.

To use the Arboretum Explorer facility visit westonbirt.arboretumexplorer.org



▲ Credit: Michal Dvorak

Tree guide

Spring

- Chilean fire bush (*Embothrium coccineum*)
- Wire-netting bush (*Corokia cotoneaster*)
- Valdivian barberry (*Berberis valdiviana*)

Summer

- Mountain pepper (*Tasmannia lanceolata*)
- Chilean lantern tree (*Crinodendron hookerianum*)
- *Eucryphia x nymansensis* 'Nymansay'

SILK WOOD
Waste Drive

Wire-netting bush

In late spring, *Corokia* produce delicate yellow flowers, which are shaped like small stars and have a lovely fragrance. The young twigs are covered with silky white hair which adds to an engaging appearance.

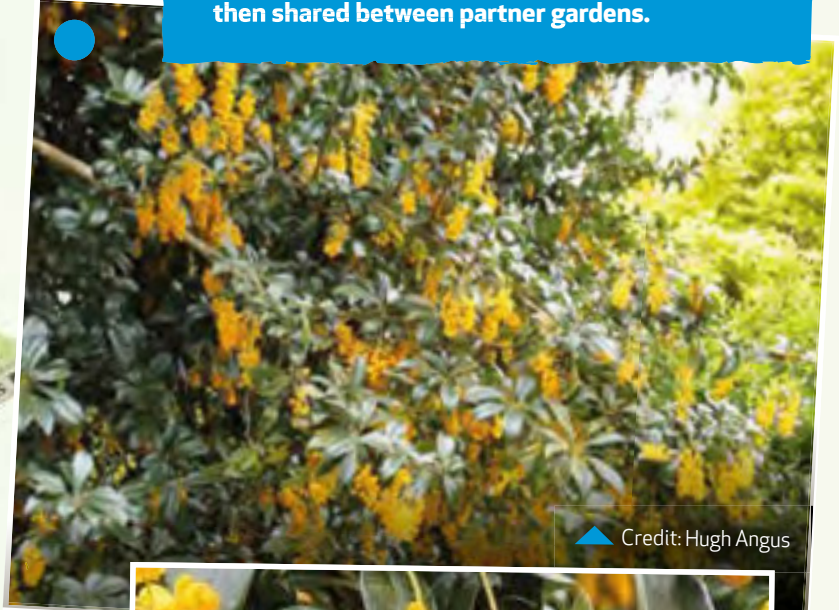


0 100 200 300m



Valdivian barberry

All of our specimens were wild collected by the Royal Botanic Garden Edinburgh in 2003 as part of a conservation project in Chile; the seeds were then shared between partner gardens.



▲ Credit: Hugh Angus



▲ Credit: Hugh Angus



Mountain pepper

Our plant 241089 is a male and ensures the nearby female plant 250775 is pollinated and produces an abundance of seeds each year.

▲ Credit: Gina Mills

Chilean fire bush

The Chilean fire bush does well in the South West and our fairly young plants have started to flower and set seed in recent years.



▲ Credit: Cairn Hurst



▲ Credit: Mike Westgate

Eucryphia x nymanii

Eucryphias are best planted in sheltered areas to protect them from strong winds. They appreciate when the crown is in the sun, so that the understory plants can grow.

Chilean lantern tree

Keep an eye out for our tree 311429 - it is a pink flowering form of the normally red flowering lantern tree. It is called *Crinodendron hookerianum* 'Ada Hoffman' and can be found in the wild.



▲ Credit: Mark Ballard





▲ Credit: Alan Conner

'sensis 'Nymansay'

**and in spots sheltered from
when the roots are shaded and
they will thrive with some**



▲ Credit: Gina Mills

Spring highlights

● **Chilean fire bush** **(*Embothrium coccineum*)**

Chilean fire bush is undoubtedly one of our most extraordinary trees due to its profusion of striking orange-scarlet flowers. *Embothrium* is native to Chile and Argentina and all our specimens have been wild collected in Chile.

The fire bush belongs to the *Proteaceae* family which is an ancient group of plants, with over 1,600 species. Members of this family are mainly found in the Southern Hemisphere. Chilean fire bush is the only species of *Proteaceae* that we grow at Westonbirt. This highly desirable plant makes a tall shrub or a small tree and can be tender (i.e. susceptible to damage in low temperates) in the British Isles.

● **Wire-netting bush** **(*Corokia cotoneaster*)**

Originally from New Zealand, this shrub always draws attention to its tortuously zig-zagged branchlets. This is called divaricate branching (having branches of wide angles). This growth habit is believed to be a natural adaptation to herbivores that generally pass it by in favour of more palatable leafy plants. Another theory about this unusual type of growth is that the reduced apical dominance (the central stem of a plant grows more strongly than the side stems) and cage-like tangle of branches evolved to protect the plant from grazing moas, large flightless birds which have been extinct for over 100 years. As you would expect from its small leaves and hairy branches, *Corokia* can withstand very dry and sunny conditions.

● **Valdivian barberry** **(*Berberis valdiviana*)**

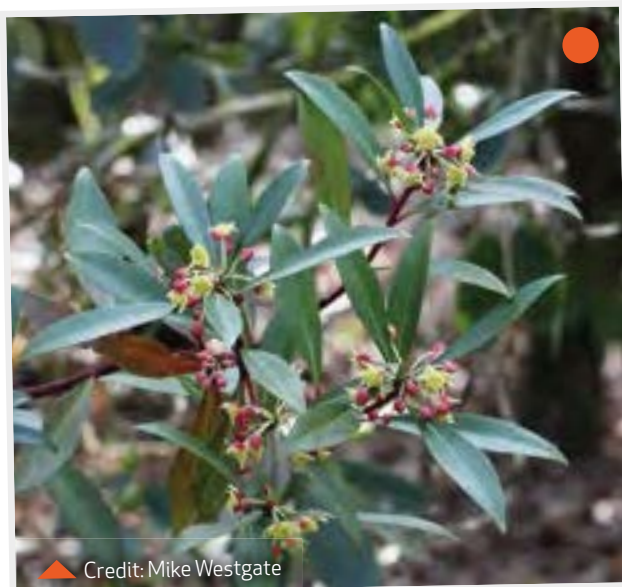
This is one of the most attractive of the barberries, showing hundreds of drooping racemes (clusters of flowers around a stem) of saffron yellow flowers in spring. *Berberis valdiviana* has dark green leaves, distinctive due to their leathery and polished appearance and their almost indistinguishable spines. It is endemic to Chile and its name refers to the Valdivia Province. Despite being introduced to cultivation in the UK around 1900, it is still uncommon and restricted to specialist collections. Its native habitat is being disturbed by commercial plantations of *Eucalyptus* (gum tree) from Australia and *Pinus radiata* (Monterey pine) from California.

Summer highlights

● Mountain pepper (*Tasmannia lanceolata*)

This ornamental and useful evergreen shrub is native to South East Australia and, of course, to Tasmania. The shoots are an interesting purplish red colour and numerous small vanilla white flowers appear in late spring/early summer. The fruit are two-lobed berries maturing in autumn. The plant is dioecious, meaning there are separate female and male plants.

The leaves and seeds are edible and were used by Aboriginal people as food flavouring. In the Colonial Age, *Tasmannia* was used to prevent scurvy and nowadays it is gaining popularity as a condiment; the plants are even grown commercially as a crop. It tastes like basil to start with and in a few seconds you will taste why it can be used as a substitute for pepper. Both leaves and seeds are also used as a spice.



▲ Credit: Mike Westgate

● Chilean lantern tree (*Crinodendron hookerianum*)

One of the best known ornamental flowering woody plants, native to Chile, is the Chilean lantern tree.

This plant relies on pollination by hummingbirds and has adapted to this. The red pendant flowers hang at the end of long peduncles (stalks) keeping them away from the stems and foliage, and allowing better access for the birds. Flowers are also narrow-mouthed and the shape resembles a Chinese lantern, just shaped for the needle-like beaks of hummingbirds.

The red petals are somewhat waxy and thickset so that they can withstand the energetic activity of birds feeding on nectar and pollinating the flowers. The hummingbirds also scatter pollen, which is unusually dry and sticks to the bird's head, which is then transferred to other flowers the bird visits. Flowers appear in May and can be found almost all year round.

● *Eucryphia x nymansensis* 'Nymansay'

Probably the best-known of the *Eucryphias*, this jolly handsome evergreen shrub or tree is a hybrid between two species, *Eucryphia glutinosa* (which can be also found at Westonbirt) and *Eucryphia cordifolia*. Both of its parents are native to Chile and this hybrid arose around 1915 at the famous Nymans garden in Sussex.

Eucryphia x nymansensis 'Nymansay' is a rather fast growing, columnar tree or shrub which is possibly the finest among late summer flowering evergreen woody plants. In August, when most of the plants look dry, it gets covered with rather delicate fragrant white flowers. They last into September and are a favourite among bees.

Don't forget to pull out the map and take it with you. Discover our seasonal picks on your next visit!



What it's like to be a Community Volunteer

▲ Credit: Brian Martin

My early experiences as a Community Volunteer were extremely daunting. I didn't know how to use a saw, any saw. I certainly couldn't start a fire without matches, and Health and Safety issues were foreign to me. Now I feel confident in all these things.

By Trish Munro, Community Volunteer, Forestry England

So why did I join the Community Volunteers? I joined because I have always been deeply concerned with people's mental health, I like working with young people, being outdoors and because I was encouraged by our manager, Karen.

As Community Volunteers, we are not given background history regarding the young people who turn up. Each group arrives with a couple of staff members. Our focus is on the experiences we will provide for these young people who prefer to be out of doors rather than in the confines of school. I am sure most of them start by feeling wary and in need of a bit of kindness and support.

“Certificates with their names on are given out and again everyone claps! The achievement is their own and they have experienced it in a kind and welcoming environment.”

A programme is set out and, visit by visit, young people acquire new practical skills. They learn how to build a fire, finding twigs that have the best chance of catching fire. They learn how to light their fires using a flint, cotton wool and Vaseline. And they begin to understand how team work is essential to get good results. Without teamwork there's no boiling water for hot chocolate, no open fire for cooking sausages, roasting marshmallows or staying warm on a cold day... and they learn how good it feels to achieve all of these things. They might even decide that their schoolmates are actually quite helpful and fun to be with.

But it's not only about fires, it's also about saws! They learn to use very sharp tools requiring instructions for use. Learning the correct skills and not just using muscle power brings the best results. Young people hone their skills using saws to slice through large logs, and knives to whittle wood into smart kitchen spoons.

Even splitting the logs to work on needs expertise: noticing the grain of the wood, understanding how to use a mallet to best effect, and of course there's that warm feeling of seeing how pleased your classmates are when they're supplied with the correct sizes of wood to fire up the pizza oven.

Preparing, cooking and eating their individually compiled pizzas makes it all worthwhile!

It isn't easy to say goodbye at the end of the programme. Each young person is asked to stand up and tell everyone about his or her learning experiences. The public speaking might feel scary, but everyone claps. Certificates with their names on are given out and again everyone claps! The achievement is their own and they have experienced it in a kind and welcoming environment.

These are some of my experiences as a Community Volunteer. Thank you Karen!

If you're interested in becoming a volunteer at Westonbirt visit forestryengland.uk/westonbirt/volunteering

▼ Credit: Brian Martin





Making a chair from a log

A journey of discovery

My neighbour and I, who are both women in the mature category and of a vintage that meant lessons at school consisted of Domestic Science or Home Economics, decided to have a go at making a chair over six days at Westonbirt.

**By Wendy Paddock, Visitor Services,
Forestry England**



Naively, we expected to show up, be given a few ready-made pieces of wood, do a little sanding and go home with a chair. So, on day one, we arrived full of enthusiasm to be presented with a log and an axe! Neither of us had ever used an axe or sawn anything other than a loaf of bread! Clearly we were in for an unexpected life experience.

The people on our course ranged from 26 to 79! On day one, our course director, Paul, explained our first challenge – take a log, split it into three pieces and create chair stretchers. Chair stretchers? Neither of us knew what stretchers were but we were soon informed that they are the sticks that attach to chair legs to keep them stable. We learnt how to use an axe and a hammer to split a log, strip it down with a draw knife and make the rounded sticks using a hand lathe. Mastering these techniques was a challenge to say the least and we both went home that day aching in places we didn't even know existed.

“ Over the next four days, we learnt to use different tools and learnt a new language: tenon and mortise, spoke shaves and planes, axes and mallets, chisels and Japanese saws. ”

On the second day, we made the chair legs by splitting our logs into a further four pieces and using a draw knife to clean and shape the wood. We then got back on the lathe to round off the legs. A level of understanding began to creep in. We were honing our skills and getting to know our fellow chair-makers and teachers. Having tea, coffee and cake throughout the day kept our energy up, also stopping for sausages and baked potatoes for lunch, giving us a chance to chat.

Over the next four days, we learnt to use different tools and learnt a new language: tenon and mortise, spoke shaves and planes, axes and mallets, chisels and Japanese saws. Everything was made by hand. The bows and combs were planed, steamed and bent. The legs axed, draw knived and lathed. The seat beaten with an adze, chiseled, then scraped and smoothed. Then miraculously after five days, something resembling a chair began to emerge.

On the final day of the course we drilled holes into the different components to attach them together. Paul, Josh and Chrissie were always there to guide and encourage us. After six days of hard graft we were the proud owners of a chair built from a log and created by our own hands.

We had pushed our boundaries, learnt new skills, met interesting people, challenged ourselves and in doing so discovered a part of ourselves long hidden within our everyday lives.



Windsor Chair Making courses are run throughout the year at Westonbirt Woodworks. For more information visit westonbirtwoodworks.co.uk

FAMILY FUN!

What's **s**appening inside a tree?

Sap is that sticky stuff you sometimes find oozing out of trees - but it is very important!

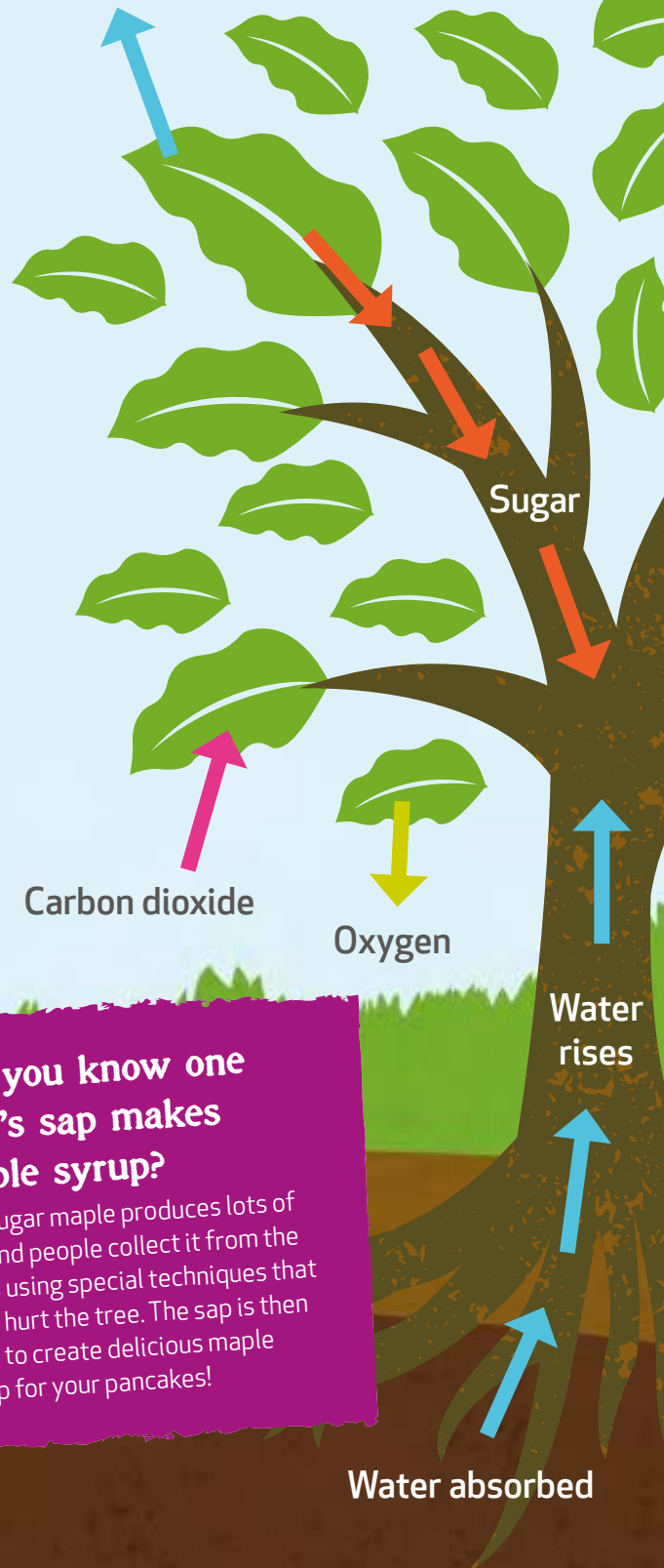
How is it made?

Trees use energy from the sun to help make sugary sap in their leaves from minerals and water. The roots collect water from the ground and send it all the way up to the leaves. A little carbon dioxide is mixed in and ta-da - sugar is made! This sugar helps feed the tree and make it grow!

In the winter, deciduous trees (ones that lose all their leaves) shut down. Before the leaves fall they send the sugar they have made to the roots where it is stored until spring.

In spring, as the weather gets warmer, the tree sends the sap stored in the roots up to the branches. This helps the tree to grow and the buds start to burst.

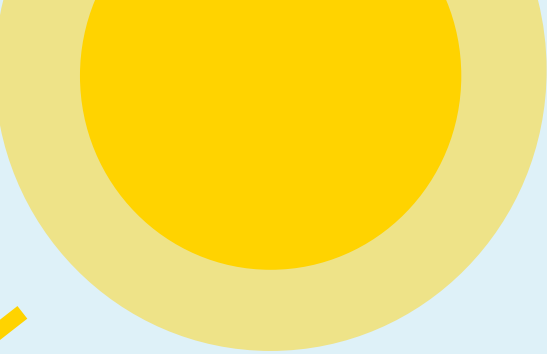
Water
evaporates



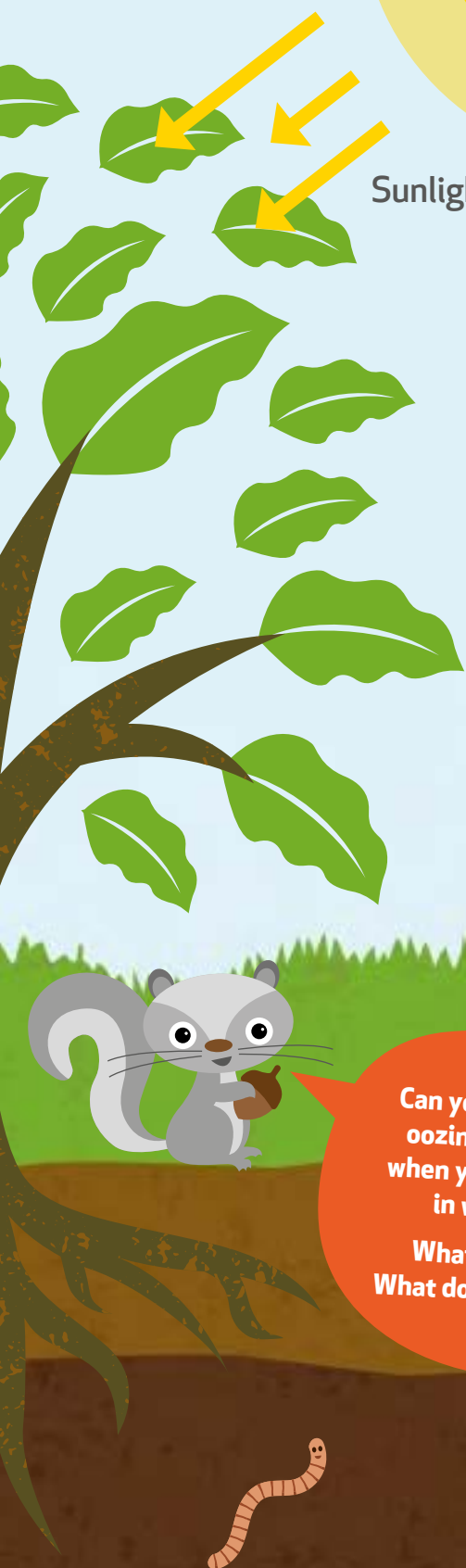
Did you know one tree's sap makes maple syrup?

The sugar maple produces lots of sap and people collect it from the trees using special techniques that don't hurt the tree. The sap is then used to create delicious maple syrup for your pancakes!

Water absorbed



Sunlight



Try making these yummy maple syrup flapjacks.

Ingredients

- 325g porridge oats
- 200g unsalted butter, softened
- 100g pure maple syrup
- 150g light soft brown sugar

Method

1. Ask an adult to help you make the flapjacks.
2. Preheat the oven to 180°C/gas mark 4 and line a baking tin with baking paper.
3. Over a medium heat melt the butter in a pan then stir in the maple syrup and sugar. Simmer until it's mostly dissolved then remove from the heat and stir in the porridge oats.
4. Put the mix into the tin and bake for 25 minutes. Leave to cool in the tin before serving... and enjoy!

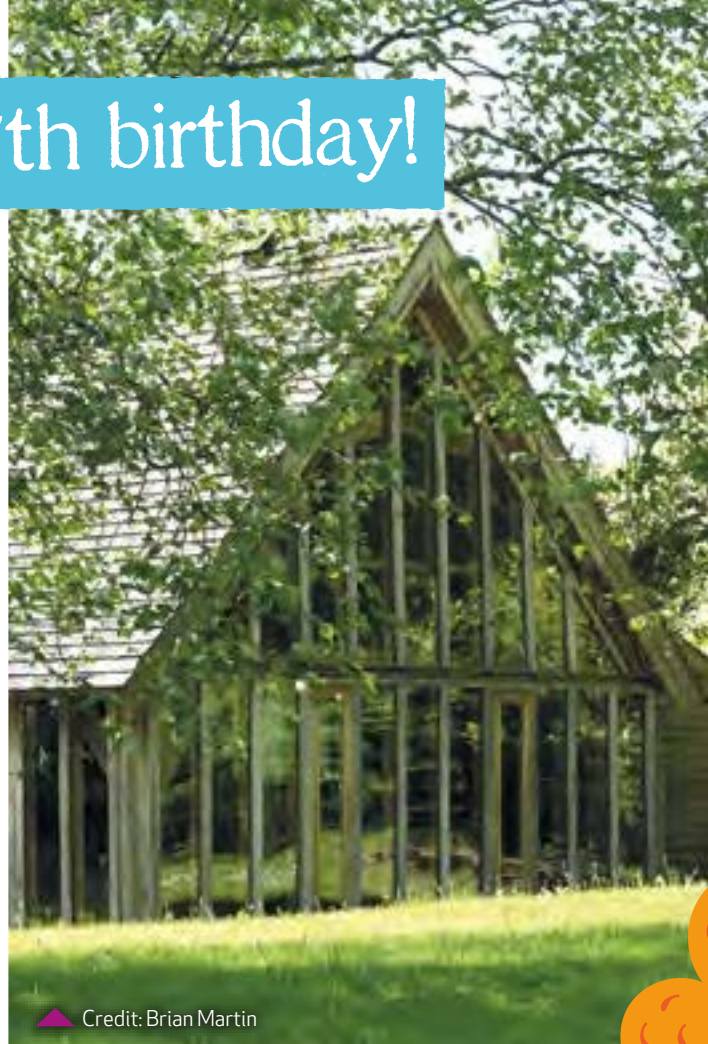
Can you spot any sap oozing out of a tree when you go exploring in woodlands?
 What colour is it?
 What does it smell like?

Celebrating our 35th birthday!

2020 marks two very special birthdays at Westonbirt – the 35th birthday of the Friends of Westonbirt Arboretum charity and 20 years since our beloved Great Oak Hall was built.

We couldn't let this year pass without celebrating these wonderful achievements with you – our members! During the month of August we will be opening the doors to the Great Oak Hall to share a very special display, highlighting the exciting achievements of our charity over its 35 year history, and the natural resources and craftsmanship that went into making the Great Oak Hall.

Our main birthday celebrations will take place over the bank holiday weekend (28 – 31 August). We hope you will be able to join us in saying 'Happy Birthday' at Westonbirt. We will have some wonderful demonstrations and fun family activities for you to enjoy!



▲ Credit: Brian Martin

Keep sending us your photos and stories

Thank you for all the stories, photos and history you have sent to us so far! We are really excited about displaying these for you to enjoy this August!

Keep sending them in! If you have any photos, memories, links or history about the Friends of Westonbirt Arboretum or the Great Oak Hall that you'd like to share with us, please do! We would love to include your contributions in our Great Oak Hall display this year.

Please email us at celebration@fowa.org.uk or post your contribution to 2020 Celebrations, Friends of Westonbirt Arboretum, Westonbirt Arboretum, Tetbury GL8 8QS.



▶ Planting trees at the arboretum



▶ Building the Great Oak Hall

You are invited to...

Friends of Westonbirt Arboretum

Big Birthday Celebration

Join us for our birthday celebrations

Bank holiday weekend (28 - 31 August)

Demonstrations

Family activities

Special displays throughout August showcasing our history, featuring members' photos, memories and stories.

Look out for exciting announcements at fowa.org.uk/celebrations and in our eNews (sign up by emailing membership@fowa.org.uk)

A shelter in the making

An update from architect Piers Taylor

Westonbirt Arboretum is working to build a brand new shelter to provide a hub for our community programme. The programme brings young people and adults, who might not otherwise have the chance to visit the arboretum, to Westonbirt. They take part in a wide range of activities focused around positive mental health and well-being.

Together with Piers Taylor from Invisible Studios, we have been working with local community groups to involve them in every step of the build, from its design to construction!

I wanted to be part of the project because I have a history of working with Westonbirt and a strong connection to the site – I designed and built the Wolfson Tree Management Centre. I've been working in natural environments, especially forests, all my life, but this project had a particular attraction to me because of the community involvement aspect. The research for my PhD focused on how to frame a construction project so that everyone, regardless of previous experience, skill or background, can be empowered to take part. This project was particularly appealing because of the vast range of abilities, skills and additional needs of the participants.

Many of the programme participants find language and conversation challenging, and this project offers them a chance to learn a different kind of communication. They learn how to communicate by working together to create a complex structure, along the way picking up the practical skills of using traditional tools such as handsaws, hand-drills, tape measures etc. and also learning Forest Management techniques such as clearing the area used for building. They also learn what could perhaps be best termed as environmental skills – what woodlands are for, why they are important and how wood can be used to create structures such as the community shelter.



Credit: Tony Lucas

One of the most inspirational parts of this project has been the impact creating this shelter has on those involved. We frequently have group leaders say 'this participant never normally talks, but has spoken loads today' or 'I've never seen this participant so happy'. It is incredible the sense of empowerment and achievement a project like this brings to everyone involved.

Keep up-to-date on progress with the community shelter in future issues. Can you help us raise the remaining funds to complete the build of the community shelter? Donate at fowa.org.uk/community-shelter

Keeping ancient traditions alive in Silk Wood

As you come off the end of the STIHL Treetop Walkway you may have noticed our Coppice Team hard at work.

Coppicing is an ancient form of woodland management that has been practised in Silk Wood since at least the seventeenth century. It involves regularly cutting the trees down to ground-level so that they send out new shoots. After a number of years, in our case every seven, these shoots will have grown into rods that can then be harvested and sold on.

Historically, this was a way of getting fuel for your fire or poles to use in building or agricultural fencing. Today the practice continues, but the poles are sent mainly to the gardening market as beanpoles and pea-sticks, hurdles and hedging stakes and binders.

As well as being a traditional part of the heritage landscape, coppicing helps to ensure the biodiversity of the woodland by creating a home for a wide variety of sun-loving plants, insects and animals.

Over the spring months, you'll be able to pick up a variety of our handmade coppice items for your garden. Come the summer, the team will be busy making charcoal and shingles, controlling brambles and putting up deer fencing. In autumn and winter they'll be back to cutting the young rods in the next section of the coppice, so that the cycle carries on.

Why not find out more about the coppice on one of our coppice open days! For more information visit forestryengland.uk/westonbirt/events

Beanpoles and pea-sticks will be available from the Westonbirt Woodworks yard throughout National Beanpole Week, in the second week of April.



▲ Credit: Dave Hughes



▲ Credit: Brian Martin



How the sound of music helps the arboretum

One of the highlights of our calendar at Westonbirt Arboretum is the Forest Live concerts. Over the years we have welcomed incredible artists from Stereophonics to George Ezra. Planning is now well under way for 2020! We caught up with Simon Hough, Forestry England's Events Manager, to find out a little more about the concerts and how they help the arboretum.

How long do the concerts take to plan?

Planning for each concert series starts a good 12 months in advance, often before the previous year's concerts have even happened! Though set up on site only takes a week there is a long list of jobs to do before that, from sourcing suitable artists to hiring the portaloos!

How did the concerts get started?

Not many people realise this, but Westonbirt Arboretum was the inspiration for the Forest Live series. Many years ago we used to host classical concerts and they were such a success that we decided to do a national concert tour! The first artists to perform this new national tour at Westonbirt were The Beautiful South, Madness and Jools Holland in 2005. There are now seven Forest Live locations all over the country!

How important are the concerts to Westonbirt Arboretum?

Very important. The income from these events helps to look after beautiful places like Westonbirt for people to enjoy today and in the future, the wildlife to thrive and our trees to be protected and nurtured. One of our key roles as The National Arboretum is to come up with new and innovative ways to connect people with trees. The concerts are a wonderful way of bringing people, who might not otherwise visit, to Westonbirt, and giving them the chance to enjoy the amazing tree collection.

Get your tickets for Forest Live 2020 and see James Morrison and Will Young, Keane, Madness or Rag'N'Bone Man live in our beautiful woodland arena! Visit forestryengland.uk/westonbirt/forest-live

The ARB Show

STIHL

FREE
Free for
The Friends
of Westonbirt
Arboretum
FREE

Friday 15th – Saturday 16th May 2020

at Westonbirt, The National Arboretum, *Home of The ARB Show*



#ARBshow2020

Celebrating the science of trees



Look out for the **ARB Show App** on the
Apple App Store, Google Play and trees.org.uk



*Free admission to Westonbirt, The National Arboretum for ARB Show ticket holders, The Friends of Westonbirt Arboretum, Arboricultural Association and ISA members only.

Join us



www.trees.org.uk/The-ARB-Show

news

Membership survey

It's always fascinating to hear your thoughts and receive comments about being a Friend of Westonbirt Arboretum.

In September 2019, we invited members to complete our online membership survey.

You can find out the results in our online blog at fowa.org.uk/blog

Congratulations to our lucky survey prize-winners:

Nicolas Lambert, Elisa Chant, Robert Bayston and Charlotte Feltham who received John Lewis vouchers. Happy shopping!

Investing in Volunteers award

We are thrilled to announce that we have been awarded the prestigious 'Investing in Volunteers' quality award for the second time.

The award is given to organisations that have demonstrated best practice in the way they manage, involve, prove and improve their work with volunteers.

A massive thank you to all our volunteers for all their incredible support and hard work.



Credit: Suzy Gardiner

New timber crane and trailer!

Thanks to your memberships our Tree Team have recently been able to purchase this purpose built timber trailer and crane.

This will allow us to deal with any timber produced onsite more efficiently, particularly in light of chalara and the large amount of ash needing removal. Going forward, this machine will also reduce the amount of heavy lifting done by the team and reduce ground damage caused by multiple tractor movements around site. Manufactured by Botex and built in Scotland, this machine has a reputation for its quality and will see us through for many years to come.

Want a sneak peek at our new trailer – come and see it at **The ARB Show on Fri 15 and Sat 16 May**, when it will be on display.



Are you receiving membership eNews and earlybird emails?

To be amongst the first to hear about activities and events, such as Enchanted Christmas and Forest Live concerts, you simply need to provide us with your email address and confirm your consent by emailing membership@fowa.org.uk

If there's a story you'd like us to feature why not drop a line to our Editorial Team at magazine@fowa.org.uk

Crossword

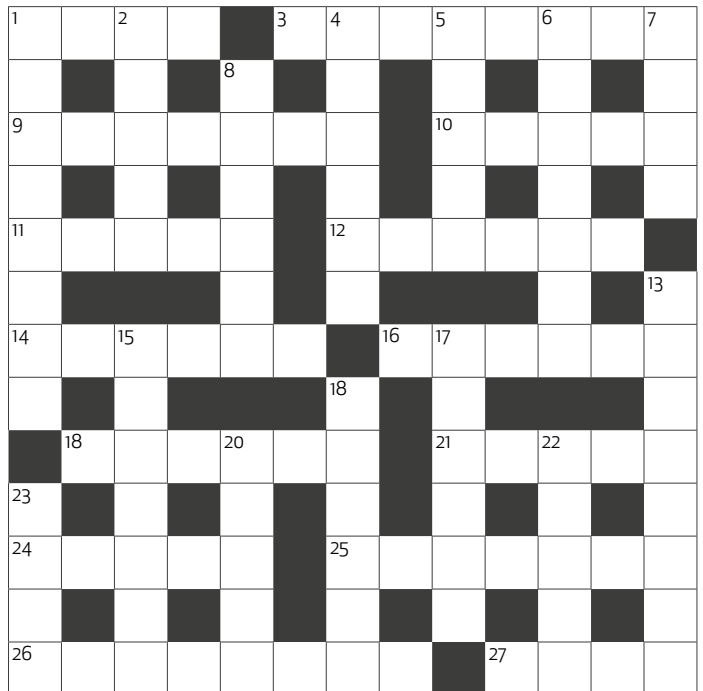
How good is your tree knowledge?

Test your skills with the crossword below with the help of some cryptic clues supplied by our wonderful member Roger Gorst.

Warning - includes some Latin!

Across

1. If small this may be a copse, used in bowls. (4)
3. An evergreen, spring flowering shrub. (8)
9. Praise a mixed hardy shrub. (7)
10. "In ----- woods the trees grow straight" (proverb) (5)
11. *Magnolia stellata* and *Cornus florida* are ----- flowering trees. (5)
12. A country with Olive as the 'National Tree'. (6)
14. An area in North Ayrshire where a tree planting scheme has flourished. (6)
16. An area in Tanzania where Baobab trees are found. (6)
19. A largely wooden structure linking with Silk Wood. (6)
21. A small valley, typically on Exmoor, with old oaks and yews. (5)
24. An area in Japan where *Cryptomeria* are grown, a species of Dahlia and even a dog. (5)
25. A green algae, oak cups used for tanning but can be mixed to no avail. (7)
26. Swietenia wood used for furniture. (8)
27. A flood plain or oak staying green. (4)



Down

1. Climbing, flowering plant, a wiriest variety. (8)
2. Small Eurasian willow, used for baskets. (5)
4. A tropical tree, known as wattle, thorn tree etc. but eaten by giraffes. (6)
5. Small tree with medicinal uses - and magic wands. (5)
6. Inn lets varied seed eating birds on fields. (7)
7. A tree for which Westonbirt Arboretum is renowned. (4)
8. Fig tree beginning as an epiphyte, providing 4 acres of shade in hot countries. (6)
13. Tree cultivated for sweet edible fruits. (4,4)
15. *Ailanthus altissima* or ----- tree. (7)
17. Loose pile of logs etc. Scottish word but can also be found in Cricklewood. (6)
18. Tree of -----, yet another name for *Ailanthus altissima*. (6)
20. A piece of wood between floor joists, a bit of twist and wangle to fix. (5)
22. Fruit, national tree of Bangladesh. (5)
23. Tree that could be Chusan, Christmas or Coconut. (4)

Read it online

You can now access the catalogue of Westonbirt Magazines online at any time.

Simply go to fowa.org.uk/magazine and enter your name and the member number on your card.

If you'd like to opt-out of receiving the printed version of the magazine, please let us know at membership@fowa.org.uk

Email a photo of your completed crossword to magazine@fowa.org.uk and if it's correct, we'll mention you in our next magazine!

Bring your membership card

Please remember you need your valid membership card every time you visit Westonbirt Arboretum so that you can enter free of charge.

If you are unable to show a valid card, you will be required to pay a non-refundable admission fee for entry.

Need a replacement card?

Please contact the Membership Team between Monday to Friday 9am – 4pm for a free replacement card on **0300 067 3300** or by emailing **membership@fowa.org.uk**. An optional donation of £3 to cover the cost of replacing your card would be gratefully received. We ask that you give us a minimum of 24 hours' notice ahead of visiting to make these arrangements.

Half way to the new Quarantine House

Target: £61,820

Your support for our new Quarantine House has been incredible.

We are over half way to reaching our £61,820 target, and have raised £31,772 with your support at the time of writing. Thank you for your very generous donations towards an essential facility that will help to protect our precious trees from pest and diseases. We will keep you updated in the next magazine!

Raised so far:
£31,772

Kind comments from our members

It's always lovely to hear from our members, we always welcome your thoughts and ideas. Here are a few nice messages we recently received.



“ We love visiting the arboretum during the autumn months because it is so bright and colourful. We take lots of pictures before we kick through the leaves, looking for 'interesting' ones to take home and craft with. We also love the atmosphere – on a bright sunny day the crowds are large and there is a wonderful feeling in the air – it really is awe-tumn.

I've attached a pic of my son Oscar posing by one of his favourite trees. ”


Jennie Gardner, Member

“ Which way today? Tree-mendous experience, seriously good smells. Life changing – all in the first nine months of our membership! ”

**Sacha & Malik
from Keynsham
(Lesley O, Member
and Dog Owner)**



Share your comments with us via magazine@fowa.org.uk



Agenda for 34th Annual General Meeting

**JOIN US Wednesday 20 May 2020
at 6.00pm**

- 1. Apologies**
- 2. Minutes** of the 33rd Annual General Meeting to be received and adopted
- 3. Matters Arising** from the above Minutes
- 4. 2019 Review of the Charity and Future Plans**
- 5. 2019 Report and Accounts**
Receive report and accounts
Election of auditors of Friends' accounts
- 6. Election to the Board**
New trustees elected to the Board in accordance with the Articles of Association
- 7. Invite Continuation in Office**
President – Christopher Brickell CBE
Vice Presidents – Roger Busby CBE and Peregrine Pollen
- 8. 2019 Review of the Arboretum**
- 9. Closing Statements**

Members' guided walk

Prior to the AGM, we will be running an exclusive members' guided walk followed by Danish pastries and tea. **Meet at the Great Oak Hall at 4.30pm if you would like to attend.**

Entry to the AGM

Members will be required to show a valid membership card on entry to the Great Oak Hall. Any non-member representative attending the AGM to submit a proxy vote in person will require identification.

Proxy voting

Any member who is unable to attend the AGM in person and wishes to appoint a proxy to attend or submit a vote by post should contact charity@fowa.org.uk or visit our website fowa.org.uk

Minutes and accounts

Agenda, papers and minutes of the 33rd Annual General Meeting are available at fowa.org.uk/agm33 or at the AGM. A small number of 2019 draft accounts will be available at the AGM.

**Issued by the trustees of the Friends of
Westonbirt Arboretum – January 2020.**

A message from CEO Mike Coe

“

The AGM is your chance to understand where your charity money is going. You will learn about life at the arboretum and meet the trustees and other members. With the exciting new vision to discuss we anticipate that this will be our busiest AGM yet. Please remember, if you can't attend you can still let us know your views by sending in a proxy vote. Contact charity@fowa.org.uk to find out how.

”

Membership benefits

The Friends of Westonbirt Arboretum charity works in partnership with Forestry England to support conservation, environmental research, learning activities and community outreach programmes at Westonbirt Arboretum, for all to enjoy.



Entry into Westonbirt Arboretum to enjoy every season



Bring up to 4 of your own children or grandchildren free of charge (aged 18 and under)



Half-price Fridays for Enchanted Christmas illuminated light trail



Forest Live pre-sale notifications



Westonbirt magazine and our regular eNews

50% off entry into Westonbirt House Gardens



Simply show your membership card to obtain half price entry into Westonbirt House's stunning gardens.

Open to visitors from April to October, Mondays to Fridays 2–5pm. Excludes bank holidays.

Partner gardens

As a Friend of Westonbirt Arboretum, you can also receive discounted entry into selected partner gardens.

Present your membership card for free entry into:

Batsford Arboretum
Moreton-in-Marsh, Glos batsarb.co.uk

Birmingham Botanical Gardens & Glasshouse, Edgbaston, Birmingham
birminghambotanicalgardens.org.uk

The Yorkshire Arboretum, Castle Howard, York yorkshirearboretum.org

National Botanic Garden of Wales, Llanarthne, Carmarthenshire
botanicgarden.wales

Royal Botanic Garden Edinburgh (including Dawyck, Benmore and Logan), Edinburgh rbge.org.uk

Present your membership card for 50% off admission into:

Bedgebury National Pinetum, Goudhurst, Kent
bedgeburypinetum.org.uk

Receive 2 for 1 entry with your membership card at:

Royal Botanic Gardens Kew, Richmond, Surrey kew.org

Royal Botanic Gardens Wakehurst Place Ardingly, Nr Haywards Heath, West Sussex kew.org/wakehurst

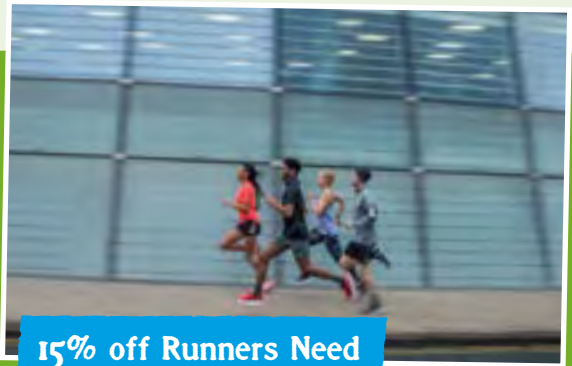
Please always call the partner garden ahead of visiting to check your membership card is valid for the date you are planning to visit.

Local partner discounts



15% off Cotswold Outdoor

Buy online at cotswoldoutdoor.com or present your membership card in-store with discount code **AF-FOWA-22**. Valid for selected lines only until 31 Dec 2020. Terms and conditions apply.



15% off Runners Need

Buy online at runnersneed.com or present your membership card in-store with discount code **AF-FOWA-22**. Valid for selected lines only until 31 Dec 2020. Terms and conditions apply.



15% off Snow + Rock

Buy online at snowandrock.com or present your membership card in-store with discount code **AF-FOWA-22**. Valid for selected lines only until 31 Dec 2020. Terms and conditions apply.



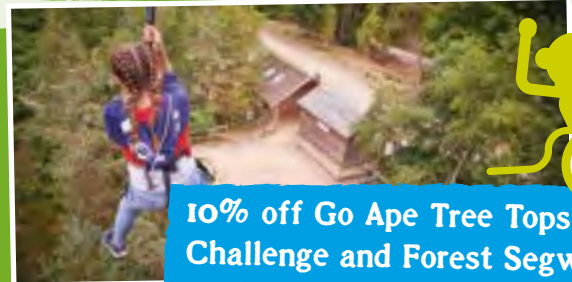
15% off Cycle Surgery

For parts, accessories & clothing and 10% off bikes. Buy online at cyclesurgery.com or present your membership card in-store with discount code **AF-FOWA-22**. Valid for selected lines only until 31 Dec 2020. Terms and conditions apply.



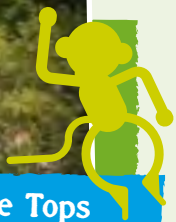
10% discount off Forest Holidays

Book online at forestholidays.co.uk using discount code **FOWA** for breaks booked before 31 Dec 2020.



10% off Go Ape Tree Tops Challenge and Forest Segway in the Forest of Dean

Book online at goape.co.uk using discount code **GAARB**. Offer valid until 01 Dec 2020. Excludes: Saturdays, bank holidays, gift vouchers and corporate bookings. Participation and supervision ratios apply.



For up-to-date details on your membership benefits please refer to fowa.org.uk/membership-benefits



A day in the life of Visitor Services

As a member of the Visitor Services Team you can be sure of one thing – no two days are ever the same. However, one thing does remain constant: to help every visitor make the most of their day, no matter where they come from or what the purpose of their visit may be.

We start the day at 8.30am and our first job is checking the facilities on site are clean, tidy and safe before our first visitors arrive at 9am. We split into two teams. One team is based at the Welcome Building and will be the frontline of friendly faces you see on arrival at Westonbirt. These staff members, together with the Welcome Volunteers on duty from our wonderful team of 60, sell tickets, answer queries, manage mobility scooters, sign-up members and provide all the maps and information people need for a fantastic day at the



Credit: Alan Connor

Credit: Alan Connor

arboretum. The remaining members of the team venture out and about on site, completing a variety of routine tasks such as play equipment inspections and emptying bins. This team provides quick response to any calls for assistance, whether it's for lost dogs or family members, first aid, blocked toilets – in fact almost anything at all!

The Visitor Services Team is also fundamental in setting up and running the many events held at the arboretum throughout the year. Visitors may well see us donning hi-vis to prepare event sites, erect signage, set up barriers and lay ground protection before turning once again to providing excellent customer service before, during and after the event.

Variety is the spice of life!

The beauty of mindful photography

'Oh wow Mum, come and look at this' exclaimed my 15 year old daughter. She takes me to the centre of some fir trees where eight earth star fungi are growing. We've seen photos of them in books, but never in the wild. We share a moment of wonder.

By Ruth, Member of the Friends of Westonbirt Arboretum

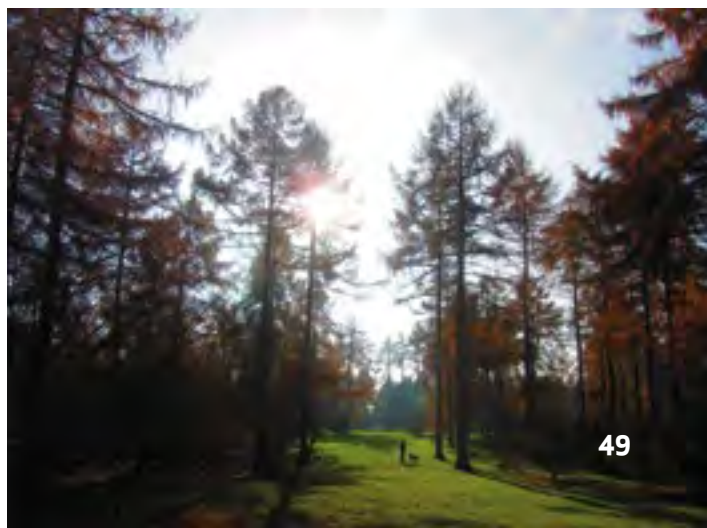
We joined Westonbirt as members two years ago. We joined because of the wonderful autumn colours, but seeing the year-round beauty of Westonbirt flexing and changing with the seasons has opened our eyes. When I started visiting, I was learning about mindful photography. For me mindful photography isn't about taking the perfect photo, it's about appreciating the detail of the environment around me. I was going through a difficult period in terms of my mental health and

I found mindful photography helped to silence difficult thoughts. Westonbirt has lots of wonderful picture-perfect photos, but the lesser seen details are just as important to notice and enjoy. Challenge yourself to explore just a small place in the arboretum of no more than a few metres square and see what you capture.

I use a lightweight standard point and press Canon camera for photography. A mobile phone camera can be just as good though. I've learnt a lot about mindful photography from Lee Aspland's books, but there are plenty of other guides online.

Why not give mindful photography a go? Get the kids involved too! It adds a new dimension to a walk – puddles can make some intriguing patterns and reflections!

See Ruth's blog for her personal journey with Mindful Photography: outdoorprescription.wordpress.com



The STIHL logo is displayed in white, italicized, sans-serif capital letters on a solid orange rectangular background in the top right corner of the advertisement.

GET A SECOND BATTERY HALF PRICE

**WHEN YOU BUY A TOOL,
BATTERY AND CHARGER**

Get a second battery half price when you buy a promotional STIHL cordless AK or AP set containing a tool, 2 recommended batteries and charger.

All the tools in the STIHL AK and AP cordless systems are designed to be easy to use, light weight and also quiet. But they don't compromise on performance. They are powered by a high-performance Lithium-Ion battery that can be used in all the tools in their system, so the second battery gives you the option to extend the run time in your tool and use it in other tools too. That's real cordless power. Made by STIHL.

AVAILABLE FROM APPROVED STIHL DEALERS, SELECTED GARDEN CENTRES AND BY VISITING [SHOP.STIHL.CO.UK](https://www.shop.stihl.co.uk)

*STIHL and its Approved Dealers reserve the right to change the sets in this promotion for alternative sets. While stocks last. The promotional set's contents can be found on www.stihl.co.uk. Terms and conditions apply - visit [stihl.co.uk/cordless](https://www.stihl.co.uk/cordless) for full details.

Friends of Westonbirt Arboretum Team



Chief Executive Mike Coe

Membership & Communications Manager
Jane Shute

Marketing & Communications Officer Jo Murray

Membership Officer Bev Starkings

Membership Administrator Kelly Hough

Membership Administrator Chloe Vincent

Interim Fundraising Manager Sarah Malina

Fundraising Administrator Gill Ball

Business Officer Lorna Smith

Finance Officer Maureen Nisbet

Retail Manager Alistair Williams

For membership enquiries:
membership@fowa.org.uk 0300 067 3300

For fundraising enquiries:
fundraising@fowa.org.uk 0300 067 3303

For marketing enquiries: marketing@fowa.org.uk

For Great Oak Hall enquiries:
greatoakhall@fowa.org.uk 0300 067 3301

Patrons

HRH The Duchess of Cornwall

Giles Coode-Adams OBE

Sir Henry Elwes KCVO

Hon Beth Rothschild

Sir Crispin Tickell GCMG, KCVO

President

Christopher Brickell CBE

Vice Presidents

Roger Busby CBE

Peregrine Pollen

Trustees

Mike Mintram (Chair)

Christine Burt (Vice Chair)

Mike Howarth (Vice Chair)

Beth Bottrill

Gavin Grant

Martin Green

Martyn Smith

Rachel Walker

Arboretum opening times

9am–5pm (last paid entry March – Nov 4.30pm)
(Dec – Feb 4pm) closed Christmas Day

General enquiries Monday–Friday

Tel: 0300 067 4890

westonbirt@forestryengland.uk

Learning Centre

The Learning and Participation Team offers a wide range of fun, hands-on programmes

Tel: 0300 067 4856

Mobility Scooter Reservations

Book in advance, collect from Welcome Building

Open daily 10am – 3.30pm

Tel: 0300 067 4861

Volunteering

Tel: 0300 067 4853

volunteer.westonbirt@forestryengland.uk

Westonbirt Shop

Open every day 9.30am – 4pm

Tel: 01666 880 787

retail@fowa.org.uk

Restaurant and Café

Open 9.30am – 4pm

(Closed Christmas and New Year's Day)

Café open seasonally, Tel: 01666 880064

Westonbirt, The National Arboretum, Tetbury,
Gloucestershire GL8 8QS

FORESTRY ENGLAND BY ARRANGEMENT WITH CAA PRESENTS:

★ ★ ★ CO-HEADLINERS SUMMER TOUR ★ ★ ★

**WILL
YOUNG**



**JAMES
MORRISON**



FRIDAY 12TH JUNE
WESTONBIRT ARBORETUM
NR TETBURY, GLOS

TICKETS: 03000 680400

BUY ONLINE/INFO: FORESTRYENGLAND.UK/MUSIC

INFO: JAMESMORRISONMUSIC.COM & WILLYOUNG.CO.UK



Forestry England