

£5.00 | Free to members

MAGAZINE OF The Friends of Westonbirt Arboretum



Westonbirt

AUTUMN/WINTER 2021/22



Working for a
greener future

Zero waste by 2030

Never a dull day at the 'birt'

Understanding the challenges
of climate change

Conservation, education and participation

Our focus for the future

Welcome to the autumn and winter edition of the Westonbirt magazine in which we provide you with an exclusive insight into life behind the scenes at the arboretum. We are all working hard towards the exciting 10-Year Vision for Westonbirt to *become a world leader in trees, inspiring people through conservation, education and participation.*

Jane Shute, Head of Supporter Engagement

To help explain the key ways in which our vision is shaping our everyday work, you will find icons incorporated into some of the articles to highlight the core themes - conservation, education and participation.

It has been a tumultuous time for everyone, navigating through the challenges and disruption the pandemic has brought into all our lives. We hope you enjoy reading about how we've adapted here at Westonbirt, so that everyone has the opportunity to connect with and enjoy the benefits of our trees.

Find out more about Westonbirt Arboretum's 10-Year Vision at fowa.org.uk/vision

To discover how you can help to further support the arboretum see pages 20 and 21.



Conservation:
Protecting our trees for the future



Education:
Sharing knowledge to create change



Participation:
Connecting people with nature

In this issue

A wonderful gift	5
Zero waste by 2030	6
Quarantine House	10
Community climate challenge	11
Events & exhibitions	12
A tasty approach to catering	16
Membership benefits	18
10-Year Vision	20
Window shopping for the soul	23
Autumn & winter tree highlights	24
Westonbirt's beauty	30
Chalara ash update	32
Life in the forest	34
The challenges of climate change	36
Never a dull day at the 'birt'	38
News	40
Volunteering: the covid journey	44
Westonbirt Woodworks	46
Financial overview	48
Friends of Westonbirt Arboretum Team	51

Contents

Features



Zero waste by 2030 6



There's more to Westonbirt's beauty than meets the eye! 30



A tasty approach to catering 16



Never a dull day at the 'birt' 38

the friends
of Westonbirt
Arboretum



Westonbirt

Issue 119, autumn and winter 2021/22:
September - February
© Friends of Westonbirt Arboretum.
Reg. Company 4965522
Reg. Charity No. 293190

Friends of Westonbirt Arboretum,
Tetbury, Glos. GL8 8QS.

Cover image:
© Johnny Hathaway

Design:
Oyster Marketing and Design
www.oysterdesign.co.uk

Print:

Stephens & George
stephensandgeorge.co.uk
Printed on Woodforce, sourced
from responsibly managed
forests. Mailed in recyclable
FSC material.

Editorial team:

Jane Shute
Alison Cobb
Jo Murray

Views expressed in the Westonbirt magazine are not necessarily those of the Friends of Westonbirt Arboretum or Forestry England. Every effort is made to check factual accuracy, but no guarantees are expressed or implied. In particular, readers should satisfy themselves about the authenticity of products advertised.

Your donation supports Westonbirt Arboretum



For 36 years our Friends of Westonbirt Arboretum (FoWA) charity has worked tirelessly to help protect Westonbirt from the threats presented to our world-leading collection, alongside supporting the arboretum through changing socio-political challenges which have the potential to disrupt and threaten our incredible work.

In 1956, the Forestry Commission took stewardship of Westonbirt from the Morley family in lieu of death duties. Initially the arboretum was cared for and run by Forest Research, but in 1992, in recognition of its growing reputation as a visitor attraction it was moved to the public estate. In 2010, the government's spending review (SR10) threatened the development of learning and engagement at Westonbirt with FoWA having to react, working with the Arboretum Director to increase funding and support these key aims at the arboretum.

FoWA elevated this support through the development and realisation of the Westonbirt Project including the STIHL Treetop Walkway, Welcome Building and Tree Management Centre to improve the visitor experience and operation of Westonbirt for all.

Today our growing challenge is to hold to account national policies that could potentially threaten the Westonbirt vision or undermine our international significance. Through your annual membership to FoWA you are ensuring that your donation can only be spent on improving our conservation, education and participation aims here at the arboretum.



Mike Coe
Friends of Westonbirt Arboretum, Chief Executive

The vital role of our trees



The climate emergency has brought some good news for trees. Growing trees is one of a suite of 'greenhouse gas removal' measures that will be required to help reach net zero by 2050.

The Government's England Trees Action Plan, launched earlier this year, committed to investing £500m on trees and woodlands between 2020 and 2025 to at least treble woodland creation rates.

While the climate emergency might be the catalyst for this activity the great thing about planting trees is that they will bring so many other added benefits. Trees and woodlands will help with nature recovery, providing new habitats and connecting existing ones. One of our rarest woodland plants, spreading bellflower, continues to thrive in the coppiced areas of Silk Wood.

Trees have an important role to play in water and soil management. Planted in the right places they can help control floods, keep rivers cool and reduce sediment run-off significantly improving water quality.

As well as timber providing an important building material, cellulose is used in just about every product application from textiles to pharmaceuticals, furniture to car parts, films, wraps, paper and cardboard. We now use wood products to give us hemicellulose and lignin to create toothpaste and low-calorie sweeteners.

In our towns and cities, trees help improve air quality and provide shade, important for cooling as summer temperatures rise.

Most importantly perhaps, whether in town or countryside, trees provide a 'nature connection' which is so critical to our wellbeing.



Andrew Smith
Forestry England, Arboretum Director

A wonderful gift that keeps giving



A gift that gives joy to others and supports conservation, education, participation!

Giving a friend or loved one membership to Westonbirt Arboretum is such a lovely present.

The opportunity to enjoy the wonderful tree collection throughout the seasons is something people can always treasure. But it's also a gift that helps to support our work and ensure the arboretum continues to thrive for generations to come.

Single Annual Membership **£40**



Joint Annual Membership **£78**

Discover the benefits membership brings at fowa.org.uk/member-benefits

Visit fowa.org.uk/join by Monday 13 December 2021 for Christmas delivery.

Zero waste by 2030



Contaminated recycling photo showing food, food packaging, plastic packaging etc.

Digging deep into Westonbirt's waste and a greener future.

As part of Westonbirt's plan to get to net zero by 2030 we've been working with an environmental consultancy, Avieco, to help develop a strategy for our waste and energy, and this involved audits, setting targets and making a plan for reductions and savings.

We have undertaken waste and energy audits to identify opportunities to reduce our carbon footprint. The full audit was extensive but here are some of the key findings and ways that we can all help to reduce our carbon footprint at Westonbirt and at home.

Our waste and where it goes

Understanding what our waste is and where it goes was an essential but messy business. Working with Avieco (an independent sustainability consultancy), we assessed the waste, what it is, what contamination we have, where it goes and reviewed data from recent years. Understanding this is an important first step to improving waste management as we work towards being net zero by 2030.



The interpretation of zero waste is that 90% of waste is diverted from landfill.

Zero waste target

As part of our pledge to also achieve zero waste by 2030 we will use the 'Reduce, reuse, recycle' pyramid. This helps us to make decisions about product choice and waste management at Westonbirt. We will consider a product's whole life cycle from manufacturing and transport to length of use and the final disposal.

REDUCE Minimize the amount of waste produced

Most preferred

ZERO WASTE HIERARCHY

REUSE Use materials more than once

RECYCLE Turn materials used into new products

RECOVERY Energy from waste

LANDFILL

Least preferred

What we discovered

In March, Avieco spent a day sorting through all the bin waste at Westonbirt. It wasn't the nicest job but the results were important.



85% of waste from visitors is general waste i.e. landfill.



38% of the waste found in the general waste stream could have been recycled.



The "General Waste" largely consisted of sauce sachets, liquid, wooden cutlery and other non-recyclable plastics.



Dog waste makes up more than 30% of the general waste stream.



92% of waste in public areas is sent to an incinerator.



134,000 takeaway cups in 2019/20 (excluding events).

If modifications were made to Westonbirt's waste collection services, we think it would be possible to divert 73% of the waste produced in public areas from landfill.

In a single year we estimated our waste (excluding sewage) is about 84 tonnes of which:

- 2.4 tonnes** are takeaway boxes
- 3 tonnes** are coffee cups
- 0.6 tonnes** are tissues and paper towels

Although the takeaway boxes and coffee cups are compostable they need an industrial digester which are few and far between in the UK.

The Westonbirt catering teams are working hard to find new takeaway products which are easy to recycle on-site.

Net zero by 2030: Aiming to eliminate use of fossil fuels (for heating and cooking).





Remember to bring your **reusable coffee cup** with you next time you visit to get **30p off your hot drink**.

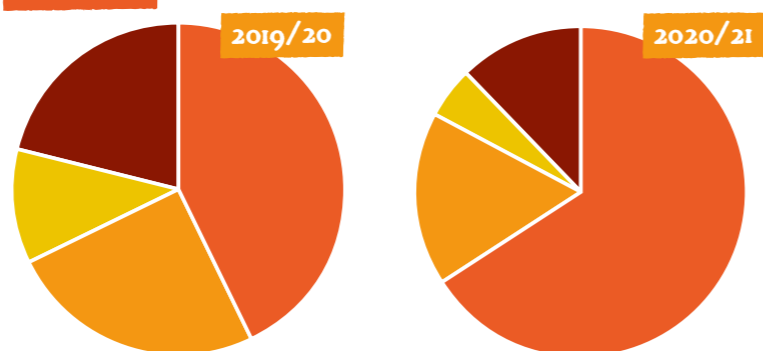
FREE coffee grounds

Ask at the restaurant or coffee trailer by the Welcome Building for free coffee grounds to take home which can be used as fertilizer in your home garden.

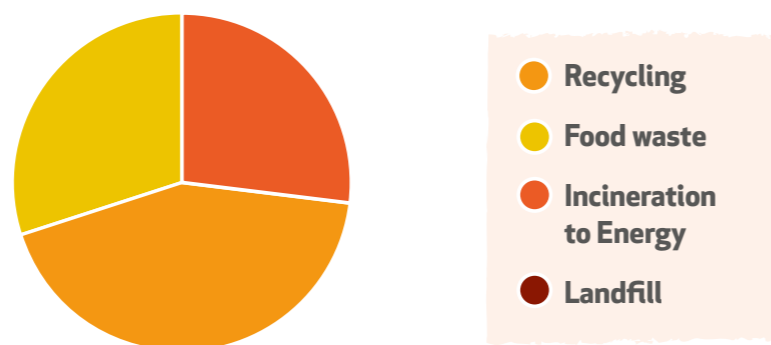
Looking ahead

Using the full audit recommendations, we can now review and manage our waste to move us further towards our zero waste goal.

Current



Potential (best practice)



We are currently working through all the recommendations and reviewing Westonbirt's waste policy, which includes partnering with the right waste collectors, developing clearer bin and recycling systems and reducing the amount of landfill items onsite. Aiming to reduce all waste streams including recycling and food waste. We're looking at improving our general waste and recycling collection to improve transparency and data.

Funding for the Waste and Energy Audit was awarded to Westonbirt by The National Heritage Lottery Fund and the Department for Digital, Culture, Media and Sport.



We need your help!
Choose the correct bin – look out for signs to make the right choice.

How you can help us recycle at Westonbirt.



If you can't find the right bin – **take it home**.



Think – do I need this item?
It's okay to say 'No thank you' to napkins and cutlery from the restaurant.



Napkins, sachets and paper towels cannot be recycled – fibres they contain are too small. Put these in general waste.



Use reusable items whenever you can.



If in doubt put the item in the general waste as recycling can be rejected if it contains more than 10% non-recyclable waste.



Compostable items carry the seedling logo. Never place compostable items with other plastics for recycling!



In addition to the seedling symbol for industrial composting there is also a **Home composting symbol** to look out for.

What you can do at home: Plastic recycling

Although we often see plastic recycling symbols it's not always clear what they mean.



Widely recycled
PET (Polyethylene Terephthalate)

Clear plastic bottles – such as fizzy pop bottles, mouthwash and water bottles, clear plastic jars, some yogurt pots.



Recyclable – check your household/ local recycling centres
HDPE (High Density Polyethylene)

Stiff plastic, often coloured – milk jugs, bleach/detergent bottles, shampoo bottles, margarine tubs, bottle caps.



Not recyclable
PVC (Polyvinyl Chloride)

Such as plastic films, plastic pipes, lawn chairs, children's toys, electrical insulators, table protectors, hoses.



Recyclable – check local recycling
LDPE (Low Density Polyethylene)

Hard flexible plastic – such as bread bags, frozen food bags, squeezable bottles i.e. hand cream.



Recyclable – check local recycling
PP (Polypropylene)

Such as packing tape, takeaway tubs, ketchup bottles, straws, carrier bags – these are mainly recycled at supermarkets.



Not recyclable
PS (Polystyrene)

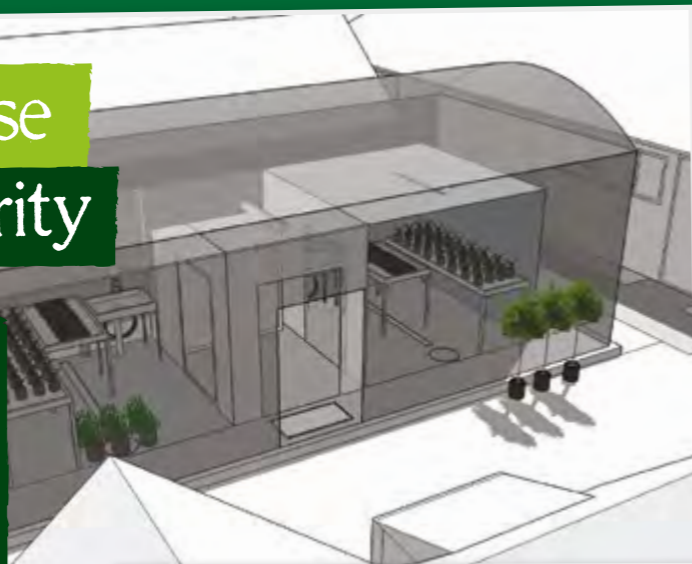
Such as foamy takeaway packaging, disposable cutlery, some meat trays, packing peanuts, some yogurt pots, styrofoam.



Specialist recycling – check for local TerraCycle® schemes

This categorises all other plastics including bioplastics, composite plastics like crisp wrappers and plastic coated wrapping paper, polycarbonate (which contains BPA).

Quarantine House boosts our biosecurity



Thank you for all your help in raising over £60,000 to help us to better protect our trees and the future of the arboretum. With your support we met our fundraising goal and it's time to take this wonderful step forward.

Neil Seegobin – Project Manager



Quarantine House at another botanic collection.

We are undertaking the construction of the Quarantine House to enable us to isolate new plants from the rest of the propagation unit and tree collection. This will enable us to monitor them for any signs of pests and diseases. Once the plant material has passed a quarantine period it will be introduced first to the propagation structures before being planted in the wider collection.

We have worked with various consultants and specialist manufacturers to design a purpose-built facility unique to Westonbirt. New plants and seeds will be held safely in a secure environment before being given approval

for planting and introduced into the wider historic landscape. The gradual addition of carefully selected new specimens is the lifeblood of the collection, as they replace natural losses each year and ensure that the arboretum can be enjoyed by future generations.

In line with our environmental ambitions and our commitment at Westonbirt to reach net zero by 2030 we are aiming to reduce water usage by installing a rainwater and greywater harvesting system. This will allow us to conserve water usage and to irrigate plants more sustainably. The collected rainwater will pass through a series of filters, including a UV light to remove any potential pathogens. We will also reduce the number of lights and install energy efficient LEDs which will help to reduce our energy use.

The drawings in this article give you a good insight into the design of the new Quarantine House. We will keep you updated as the project progresses.

Follow updates on the Quarantine House build at forestryengland.uk/westonbirt/quarantine-house

Green thinking about the impact of our work

Community Climate Challenge

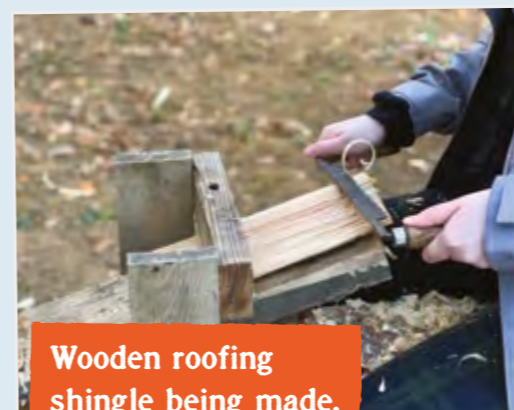


We are currently building a new timber shelter in Silk Wood to enable us to continue to build

on the work of the Westonbirt Community Programme. One of the aims of the build is to showcase sustainable building practices, using Westonbirt grown timber where possible. This will include the production onsite of 2,500 wooden roofing shingles by community participants and our resident coppicers.

Karen Price – Community Co-ordinator, Forestry England

However we also need to consider the impact of the community programme long term.



Wooden roofing shingle being made.



We asked members of Wild Westonbirt, our youth forum, for their suggestions to get them thinking about the impact of our work and ways in which we might reduce it. Here are some of their suggestions:

- **Harvest rainwater** for damping down the campfire.
- **Separated waste recycling bins** to match waste recycling streams available.
- **Only burn seasoned (dry) wood** to reduce the emission of part burnt hydrocarbons.
- **Solar lighting** in the shelter.
- **Use eco-friendly/chemical free cleaning products** where possible.
- **Locally sourced ingredients/seasonal menu** for group cookouts. See if we could grow our own pizza toppings!
- **Continue to help with the coppice restoration**, which supports habitat biodiversity, create homes for wildlife such as bug hotels, bat and bird boxes, and insect log piles.
- **Carry out wildlife surveys around the shelter** to discover and record what lives there.
- **The Wild Westonbirt COP26 Youth Summit** to discuss climate impact with Forestry England, Friends of Westonbirt Arboretum, and franchisee staff.

I think you'll agree that there are some great ideas and it's always good to be spreading the message about a greener Westonbirt to everyone involved!

Coming up

Guided walks and tours

Wonders of Westonbirt Guided Walk

Explore the seasonal highlights of Westonbirt's Old Arboretum.

Check forestryengland.uk/westonbirt/events for dates, times and booking information

For children and families

Tots and Twigs Forest School

Forest school for children aged 2–5 years old.

Thu & Fri mornings and afternoons during term time

Price: £80 (£70 for Friends of Westonbirt Arboretum)

Forests for the future

Climate change workshops for families to experience together. Explore the themes of biodiversity, future forests or adaptation through discovery and craft activities.

Tue 26, Wed 27 & Thur 28 Oct

Aimed at age 7+, 45 minutes long

Booking essential – please book at forestryengland.uk/westonbirt/events

Enchanted Christmas

Weather the storm to help to reunite Father Christmas with his lost reindeer and experience mesmerising light displays and stunning spectacles along the way!

Fri 26 – Sat 27 Nov

Fri 03 – Sat 04 Dec

Fri 10 – Sun 12 Dec

Fri 17 – Tue 21 Dec

Prices*

Adult: £18

Child (3–18 years, under 3s go free): £9

Friends of Westonbirt Arboretum receive half price tickets for Friday bookings.

*Prices include £1 non refundable booking fee



Active Forest events

Buggyfit

An opportunity to regain your fitness after having a baby.

Every Wed & Thu, Wed 10.45am & Thu 11.15am

Price: £7 pay as you go

Buggy Barre

Bring your baby along to this low impact ballet class.

Every Thu, 11am

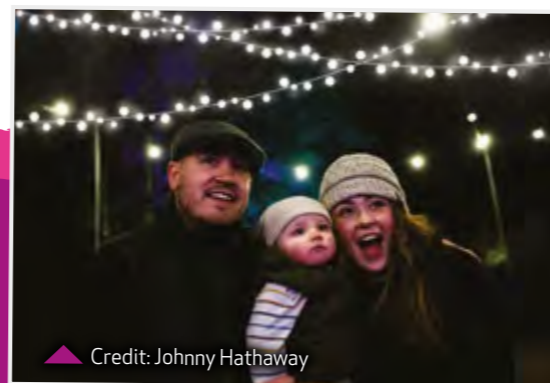
Price: £10 pay as you go

Forest Runner

Choose between a 5K or 10K and enjoy some beautiful autumnal surroundings.

Sun 12 Sep, 4pm

Price: 5K – £22, 10K – £24.75



Credit: Johnny Hathaway

Workshops and courses

Beekeeping for Beginners

Discover the wonders of the beehive and how you can keep your own honeybees at home.

Sat 04 & Sun 05 Sep, 10am – 5pm

Price: £80

Windsor Chair Making Course

Create your very own Windsor chair using traditional skills.

06 – 11 Sep, 04 – 09 Oct, 11 – 16 Oct, 9am – 5pm

Price: £425



Willow Sculpture Workshop

Create your very own wonderful willow sculpture in a relaxed and fun environment.

Sat 11 Sep, Sat 09 Oct, Sat 13 Nov,

Sat 11 Dec, Sat 15 Jan, Sat 19 Feb 10am – 4pm

Price: £85

Impressions of Westonbirt – Creative Abstracts Photography Workshop

Look beyond the obvious and develop your creative eye.

Sat 11 Sep, Tue 05 Oct, Thu 21 Oct, Thu 04 Nov, Thu 18 Nov, Wed 23 Feb, 9.15am – 4.15pm

Price: £140

Find out more

Visit forestryengland.uk/westonbirt/events or call Westonbirt Arboretum on 0300 067 4890 to find out more information about any of our events.



Autumn Flower Posy Workshop

Using rich autumn flowers, learn how to make a beautiful hand tied posy.

Wed 22 Sep, 10.30am – 1pm

Price: £75

Two Day Willow Workshop

Spend time immersed in nature and create something magnificent with full tuition.

25 & 26 Sep, 04 & 05 Dec, 10am – 4pm

Price: £160

Autumn Leaves in Watercolour

Embrace the autumn colours whilst learning the basics of watercolour illustration.

Sat 02 Oct, 10am – 4.30pm

Price: £85

Beginners Digital Landscape Course

Aimed at the beginner who has a digital camera but lacks confidence to move away from Auto Mode setting.

Mon 04 Oct, Fri 08 Oct, 10.30am – 3.30pm

Price: £65



▲ Credit: Johnny Hathaway

Intermediate Digital Photography Course

Develop your photographic skills and understanding with this one-day course.

Fri 22 Oct, 10.30am – 3.30pm

Price: £120

Failsafe Plants

We will spill the beans and reveal the plants that you can rely on to work well in any garden.

Wed 27 Oct, 10am – 1pm

Price: £75

Planning Planting

Learn techniques that professionals use to keep gardens looking great all year round.

Wed 03 Nov, 10am – 4pm

Price: £105

Christmas Wreath Workshop

Enjoy a minced pie while you create your own Christmas wreath.

Wed 01 Dec, Wed 08 Dec, Wed 15 Dec

10am – 12.30pm & 1pm – 3.30pm

Price: £85



Autumn 2021 exhibitions

at the Great Oak Hall

Open 10am to 4pm – free entry after admission to the arboretum

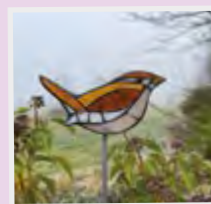


ANDY WALKER "VIVID VISTAS"

An award-winning artist exhibiting his

innovative work that comprises intricate mosaics of thousands of hand-drawn triangles to create stunning and vibrant images.

30 Sep – 04 Oct



COTSWOLD EDGE GROUP "INSPIRATIONS"

A highly skilled group of artists/designers are returning to the Great Oak Hall. Visitors can view and discuss the latest works of

Liz Brooke-Ward (Textile Artist), David Laycock (Glass Artist) and Grahame Tucker (Sculptor) throughout the exhibition.

06 – 10 Oct

ASHLEY, EELES AND RILEY "POTS AND PAINTINGS 2021"

Eeles Pottery and artists Gill Ashley and Jenny Riley re-unite to bring you collectible, exquisite pots and paintings in various mediums from oils and acrylics, to watercolour and mixed media.

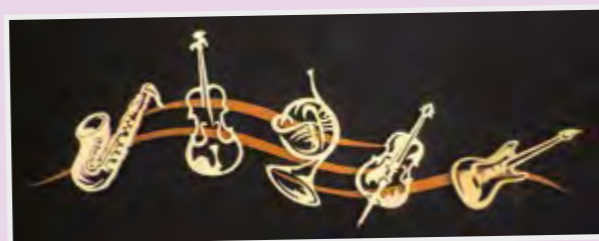
13 – 17 Oct



COTSWOLD CRAFTSMEN "KINDLE YOUR SPIRIT"

Inspired by nature, the artists and craftsmen have been busy making beautiful things you'll love. They create and make items by hand from raw materials, including fine jewellery and textiles and all in between to produce unique and exclusive pieces.

21 – 25 Oct



CAROLE INGRAM AND GILL HARKNESS "STUDIO MAGIC"

Carole's passion for watercolours and mixed media

focuses predominantly on portraits of people and animals, leaving unpainted sections to the viewer's imagination. Gill specialises in contemporary silver jewellery and enamel work; the beauty of nature has a huge influence on her.

27 – 31 Oct

SEVERN VALE ARTISTS "DIFFERENT PERSPECTIVES"

Heather Morgan, Anne Lewandowska and Anne McAllister showcase a varied exhibition including Batik, weaving, painting and photography featuring landscape and the natural world as inspiration.

02 – 05 Nov



SONGWAYS SINGING WORKSHOP

Lift up your voice in the Great Oak Hall – Led by Jane Harris, Director of Songways

Sing in the magnificent Great Oak Hall, learn songs and harmonies to celebrate the beauty of the natural world, including Jane's own compositions.

Open to all. Songs and harmonies taught by ear.

Some comments from Jane's previous workshops at the Great Oak Hall:

"Absolutely wonderful"

"My first experience of Songways and I loved it"

Sat 06 Nov, 10am – 3pm

£29 including admission to the arboretum (£24 for Friends of Westonbirt Arboretum)

Booking: songways.co.uk



 A tasty new approach to catering

As we welcome visitors back to Westonbirt Arboretum, we are delighted to unveil an exciting and delicious choice of foods to fuel your adventures. New catering partners, Fosters Events, have launched three exciting new outlets at Westonbirt. They are actively considerate of the environment and employ credentials that complement our own green approach – and make delicious food!



Credit: Brian Martin

The Kitchen, The Pantry, and The Smokehouse are situated at the heart of the arboretum and offer a wide choice of excellent foods. There's something for everyone! The Kitchen, formerly the Westonbirt Café, and The Pantry, formerly the ice-cream hatch, have both been completely refurbished and provide really well thought-out, light and inviting environments with a wide selection of menu options.

Barbara Wragg, Westonbirt Catering Operations Manager for Fosters Events, explains,

“ We wanted to enhance the environment, becoming part of the landscape rather than distracting from it. Every detail of The Kitchen, The Pantry, and The Smokehouse aims to do this, whether that be the natural textile fittings, or the carefully designed menus that celebrate local suppliers and ingredients. ”

Fosters has a strong commitment to both people and planet. Their ethos embraces this at a functional level as well as living with a green mindset; 70 per cent or more of their produce is sourced from within 20 miles of site and they have a strong standing on non-GMO ingredients, ensuring that any meat products meet the UK Welfare standards. They are also a great partner for Westonbirt in helping to maximise recycling and minimising food waste.

Fosters has joined forces with surplus food app, *Too Good To Go*, and food redistribution charity, *FareShare South West*, to fight food waste. By partnering with organisations who, like us, are committed to doing better by our planet and eco-systems, we are ensuring we action our promises at all levels of the Westonbirt site.

Neil Lodge, CEO of Fosters Events said,

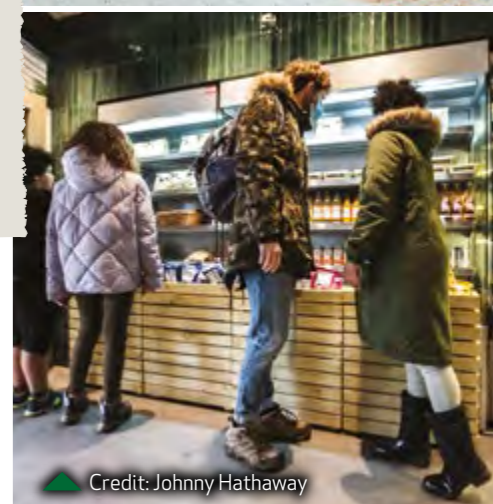
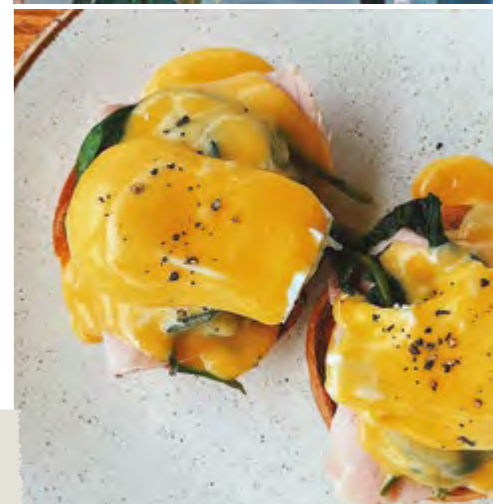
“ We are delighted to join forces with both *FareShare South West* and *Too Good To Go*, to provide high-quality prepared food and hope our stepping-up serves as an example for our fellow caterers. We hope that our guests see the value in our service beyond just the fantastic plates of food and unique dining experiences that our kitchen team creates. ”

We hope you will enjoy discovering our new catering service that will be operating to the greenest of standards without compromising on the quality of the food or the experience.

The Kitchen and The Pantry opening hours are 09.30am – 5pm

The Smokehouse is operated at weekends, bank holidays and at varying times throughout school holidays. Please always check forestryengland.uk/westonbirt for current opening times and note minimum opening hours are 12pm – 3pm

The Kitchen is now open and serving bountiful breakfasts and brunch, luscious lunches, and plenty of freshly ground coffee, locally sourced drinks, and tasty tipples to go with! The Pantry offers a 'grab and go' selection, with homemade cakes, freshly made sandwiches, and ground Clifton coffee. The Smokehouse has a full Pizza oven fired by Westonbirt wood, and a whole array of mouth-watering toppings.



Credit: Johnny Hathaway



Credit: Johnny Hathaway



Credit: Johnny Hathaway

Membership benefits

The Friends of Westonbirt Arboretum charity works in partnership with Forestry England to support conservation, education and participation programmes at Westonbirt Arboretum, for all to enjoy.

As a member, your donation supports this incredible work. In return, you receive a host of membership benefits:



Entry into Westonbirt Arboretum to enjoy every season

Please check whether you are required to pre-book a time slot to visit Westonbirt Arboretum at fowa.org.uk/pre-book



Kids go free! Bring up to 4 of your own children or grandchildren free of charge (age 18 and under)



Free, fun, seasonal, educational activities



10% member discount off your purchases at the Westonbirt Arboretum Shop

Simply show your valid membership card when making your purchase



Behind the scenes Westonbirt magazine and regular Friends' eNews



Earlybird presale for Enchanted Christmas illuminated light trail and Forest Live concerts

Partner gardens

As a member, you can also benefit from discounted entry into selected partner gardens.

Visit for free:

Batsford Arboretum
Moreton-in-Marsh, Glos batsarb.co.uk

Birmingham Botanical Gardens and Glasshouse, Edgbaston, Birmingham
birminghambotanicalgardens.org.uk

The Yorkshire Arboretum, Castle Howard, York yorkshirearboretum.org

National Botanic Garden of Wales, Llanarthne, Carmarthenshire
botanicgarden.wales

Royal Botanic Garden Edinburgh (including Dawyck, Benmore and Logan), Edinburgh rbge.org.uk

Receive 50% off admission into:

Bedgebury National Pinetum, Goudhurst, Kent
bedgeburypinetum.org.uk

Receive 2 for 1 entry into:

Royal Botanic Gardens Kew, Richmond, Surrey kew.org

Receive 2 for 1 entry into:

Royal Botanic Gardens Wakehurst Place Ardingly, Nr Haywards Heath, West Sussex kew.org/wakehurst

Please check the partner garden's website ahead of visiting, as you are likely to be required to pre-book a time slot to gain entry.

Member Tuesdays



Credit: Johnny Hathaway

Bring a friend free of charge on Tuesdays from 09 November 2021 to 29 March 2022 inclusive. Simply pre-book a free time slot for yourself and a

secondary time slot for your friend up to seven days in advance. You will be required to show your valid membership card along with confirmation of both time slots at the Welcome Building when you visit.

Valid for one friend per member per visit only.

15% off Runners Need

Visit the running specialists and present your membership card in-store, or shop online at

runnersneed.com with discount code **AF-FOWA-22**. Valid until 31 December 2022 (T&Cs Apply).



15% off Snow + Rock



Huge range of ski, snow and climbing clothing and equipment from the world's best brands. Shop in-store with your membership card, or online at snowandrock.com with discount code **AF-FOWA-22** Valid until 31 December 2022 (T&Cs Apply).

Local partner discounts

15% off at Cotswold Outdoor

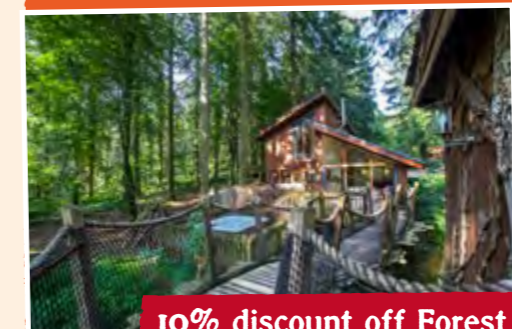


Get expert advice and the best brands in-store with your membership card, or shop online at cotswoldoutdoor.com with discount code **AF-FOWA-22**. Valid until 31 December 2022 (T&Cs Apply).



10% off Go Ape Tree Tops Challenge and Forest Segway in the Forest of Dean

Book online at goape.co.uk using the discount code **GAARB** until 31 December 2021 and **GAARB22** from 01 January 2022. Excludes Saturdays, bank holidays, gift vouchers and corporate bookings. Participation and supervision ratios apply.



10% discount off Forest Holidays

Book online at forestholidays.co.uk using discount code **FOWA** for breaks booked before 31 December 2021.

For up to date details on your membership benefits please visit fowa.org.uk/member-benefits

Supporting our 10-Year Vision



Credit: Johnny Hathaway

Different ways to support the arboretum

We are very lucky to have so many committed Friends of Westonbirt Arboretum. Without supporters like you, we simply couldn't have recognised so many incredible achievements over the years. Looking ahead there is still a huge amount to be achieved and our 10-Year Vision provides us with a progressive roadmap to establish Westonbirt as a world leader in tree conservation, inspiring, educating and engaging people with our wonderful collection.

To achieve our 10-Year Vision we will need the ongoing support of our Friends. We have developed a number of new ways to donate as well as the more traditional ones, and we thought you might like a refresh on some of the options.

The gift of membership

Share the love

Please share the idea of membership with your family and friends or give them membership as a gift! You can gift a membership securely online by debit/credit card and we'll send the recipient a membership card, car sticker, information leaflet (letting them know all the benefits they are entitled to) and invite them to receive our e-news and earlybird emails.

Share your love of Westonbirt by gifting a membership at fowa.org.uk/join

Support a square

Mark that special occasion

Every acre at Westonbirt Arboretum requires ongoing care and management from Westonbirt's dedicated Tree Team. By supporting a virtual square of the arboretum, you are helping this vital work to continue. You can dedicate your square by donating £25 per year to mark a celebration or commemoration. A personal message will be included on our website.

Support a square at fowa.org.uk/support-a-square



Leave a lasting legacy

For a greener future

Leaving a gift in your Will to Westonbirt Arboretum can make a real difference: from safe guarding species of flora and fauna for a sustainable future, supporting accessibility for all through mobility programmes to contributing towards community engagement programmes that reach out to the vulnerable and people from disadvantaged backgrounds. You can find out why some of our supporters have chosen to leave a gift in their Will by contacting us at legacy@fowa.org.uk to request our legacy brochure.

Show your support

Make a donation

Naturally, we welcome donations of any value to help further support Westonbirt Arboretum. If you can Gift Aid your donation, we will receive an additional 25% from HMRC in addition to your kind donation.

Make a donation at fowa.org.uk/donate



Leaves of life

Add a leaf to our tree sculpture

Located in the beautiful Great Oak Hall are three magnificent tree sculptures filled with personalised leaves displaying lovely memories and messages. It's a wonderful way to recognise a loved one or mark a special occasion at the heart of the arboretum for a donation of £280.

Personalise your leaf at fowa.org.uk/leaves-of-life



To find out more about helping to further support Westonbirt Arboretum visit fowa.org.uk/support
Thank you!

New
member
benefit!

10%
member discount
at the Westonbirt Arboretum Shop

Just show your membership card in the shop before you purchase

Window shopping for the soul

As we think about what we can do to tackle climate change, it is easy to feel overwhelmed by the hard hitting headlines of the climate emergency. Known as 'eco-anxiety', symptoms can include guilt, futility, and fear. It is important we don't let these feelings engulf us, and accept that these are normal, rational, and even positive feelings. Being anxious about the environment shows we are aware, and concerned about the challenges it faces. And if we are aware of the challenges, we can do something about them.



Karen Price -
Community Coordinator,
Forestry England

Recognise

...what we can and can't do. Using plastic free teabags, peat free compost and FSC timber products are relatively simple actions. However, some things will be out of our control as individuals until much bigger infrastructure changes are implemented.

Volunteer

Research suggests that the act of giving can help improve mental wellbeing by fostering a feeling of purpose and self-worth. Give time to a local environment project by becoming a volunteer. This can also help you connect with other people with a similar passion and regain a sense of control over the plight of the planet.

Connect

Experience magical moments of awe and wonder in the beauty nature provides. As climate activist Naomi Klein explains, 'It is important to prioritise opportunities to connect with the natural world in ways that are not all about peril'. Swap an afternoon of retail therapy and window shopping with some green therapy at Shop Window - an area of the arboretum deliberately planted to show off beautiful trees in a beautiful setting.

Credit: Johnny Hathaway

Autumn & winter tree highlights

A walk through Westonbirt can feel like a walk through time; many of our oldest trees have been here since the arboretum was planted. Robert Holford would no doubt be very pleased if he could see his trees, almost 200 years on, having reached their full glory.



Seasonal map

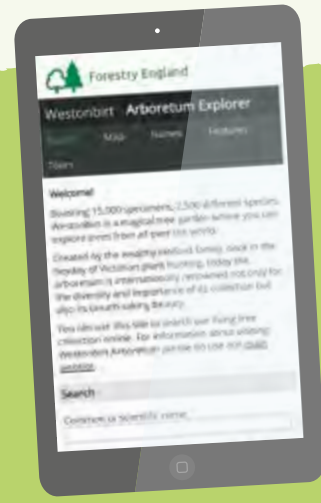
You can use this pull-out map to identify and locate where each of the trees in the highlights article can be found in the arboretum.

Each tree has a coloured dot next to it. You will find the same coloured dot placed on the map to show its location. You may wish to take the full article on your next visit.

The map is a simplified version of our main map. We've done this to make finding the tree easier. If you would like a copy of the full map, pick one up on your next visit.

Pull out map

The coloured dots mark some of the spectacular trees worth seeking out on your next visit...



Use our Arboretum Explorer

Arboretum Explorer is a web based search facility that enables you to locate specific trees at Westonbirt. You can use as much or as little information as you have and the website will show you a map with the location of the tree.

To use the Arboretum Explorer facility visit westonbirt.arboretumexplorer.org

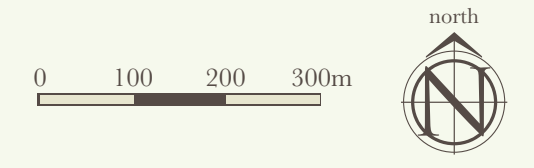
Japanese maple 'Vitifolium'
Robert Holford used these trees in his original Acer glade and they worked so well they have been planted here ever since.



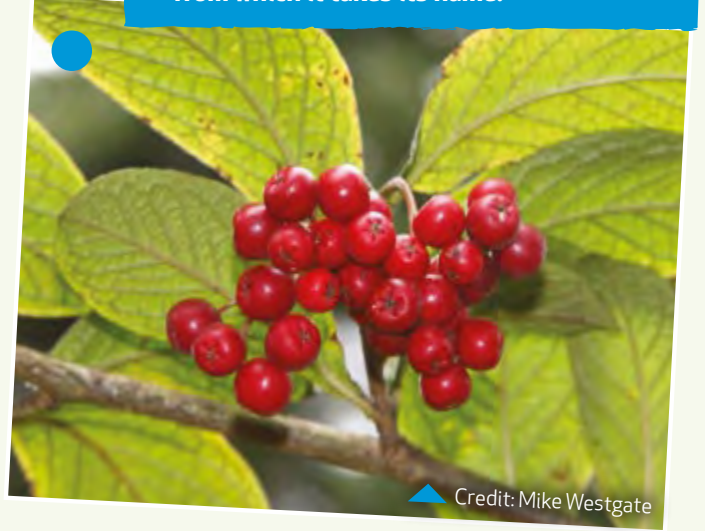
Credit: Johnny Hathaway



Credit: Mike Westgate



Hollyberry cotoneaster
Known for the large clusters of red berries from which it takes its name.



Credit: Mike Westgate

Tree guide

Autumn

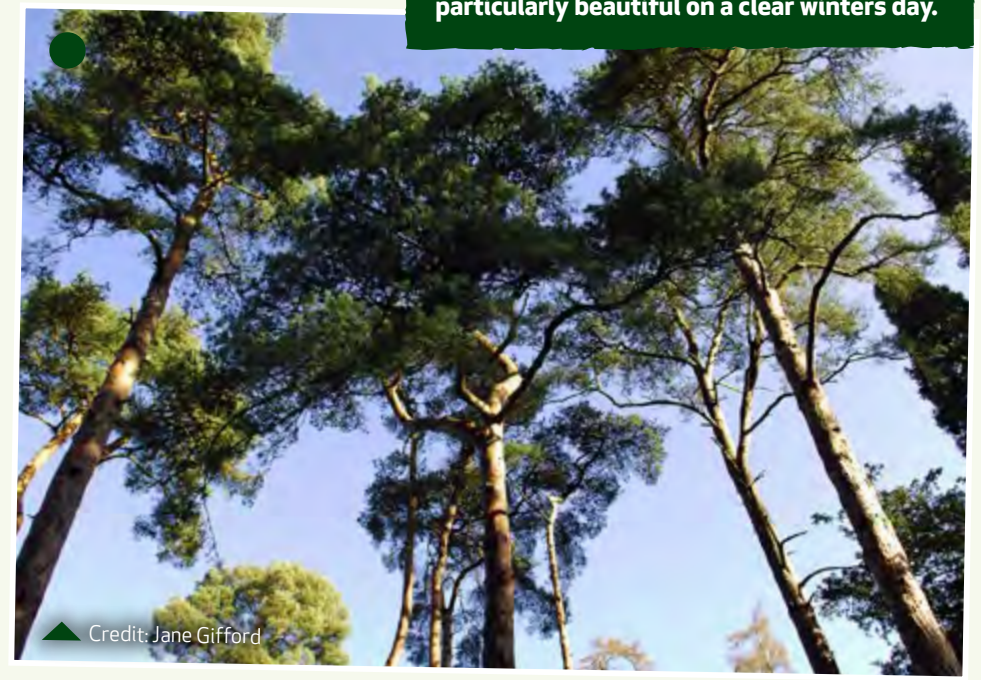
- Katsura (*Cercidiphyllum japonicum*)
- Japanese maple 'Vitifolium' (*Acer japonicum* 'Vitifolium')
- Hollyberry cotoneaster (*Cotoneaster bullatus*)

Winter

- Incense Cedar (*Calocedrus decurrens*)
- Scots pine (*Pinus sylvestris*)
- Oriental plane (*Platanus orientalis*)



Scots pine
The Scots pines around Savill Glade are particularly beautiful on a clear winters day.



Credit: Jane Gifford



Katsura
Our champion Katsura in Victory glade was planted in 1933.

▲ Credit: Gina Mills



▲ Credit: Paul Box



Oriental plane
The bark of the Oriental plane looks like scales and is very tactile.



▲ Credit: A. B. Jackson, Catalogue of the Trees and Shrubs at Westonbirt 1927

Ince Cedar
Our oldest specimen is on Mitchell Drive and was planted around 1860, next to an equally old and fine Oriental plane.



▲ Credit: A. B. Jackson, Catalogue of the Trees and Shrubs at Westonbirt 1927

Autumn highlights

- **Katsura** (*Cercidiphyllum japonicum*)
Native to Japan, this tree was widely planted at Westonbirt in the early 20th century and has remained a firm favourite here ever since. Autumn is definitely their best time, when the scent of burnt sugar hangs in the air, often some distance away from the trees themselves. The leaves have a distinctive heart like shape and turn from green to a wide variety of yellows, reds and pinks.
- **Japanese maple 'Vitifolium'** (*Acer japonicum* 'Vitifolium')
The branches of these maples are often covered with a thick moss which makes the trees look more ancient than they are. This maple cultivar comes into its own in the autumn, when the large, vine like leaves, turn a rich variety of reds.
- **Hollyberry cotoneaster** (*Cotoneaster bullatus*)
Introduced from China at the end of the 19th century, this cotoneaster has now naturalised in some places in the UK so it is easy to forget that these trees were new and exotic in their time. It was planted in several places along Pool Avenue by Sir George Holford and although only two specimens remain, they are still a fine sight when the berries are at their peak.

Winter highlights

- **Incense Cedar** (*Calocedrus decurrens*)
The tall, columnar shape of this tree make this one of Westonbirt's icons. The group planted by Sir George Holford (in Holford Ride) around 1910 is one of our most photographed backdrops and neatly shows the impact of planting trees as clumps rather than individuals. Look closely at the bark, which is twisted and fissured, and you can see colours ranging from green to red and pink.
- **Scots pine** (*Pinus sylvestris*)
Starting in 1829 on turning 21, Robert Holford planted over 300 of these when creating the structure of his arboretum. Plentiful but striking – the salmon pink bark and lollipop shape provide connection through the landscape.
- **Oriental plane** (*Platanus orientalis*)
Oriental planes come from Greece and the surrounding countries; they are known to have been cultivated there since antiquity. Hippocrates, the father of medicine is reputed to have taught his followers under a plane tree in Kos. They have been grown in the UK since the 16th century and at 160 years old our oldest specimens are still relative youngsters – they can live over 500 years. In winter the sinuous branches and distinctive flaked bark make this tree as beautiful without its leaves as with.

Don't forget to pull out the map and take it with you. Discover our seasonal picks on your next visit!

There's more to Westonbirt's beauty than meets the eye!



If you've visited the arboretum, you know how beautiful it is: magnificent spring flowers, dappled summer sunlight, fiery autumn colour and awe-inspiring winter conifers are something to behold. But let me ask you a question, what really makes it so beautiful?

Susanna Bayliss – Interpretation Officer, Forestry England

Westonbirt Arboretum is a botanic garden with a difference. When the Holfords started planting back in 1829, they laid out their tree landscape using WS Gilpin's Picturesque style that was popular in the Victorian era. It is a heritage style that we still follow today and one that makes Westonbirt so unique amongst botanic gardens where trees tend to be categorised taxonomically or geographically. The picturesque style, literally meaning 'as in a picture/painting', used the trees as a paintbrush to create a landscape that was aesthetically beautiful.



So, what does 'to be beautiful' mean to you? The term 'aesthetic' that is used to describe the Picturesque style derives from the Greek word for 'sense perception', and only narrowed its application to the visual sense during the Romantic period of the 18th Century.¹ Psychologists state that 'aesthetics is defined as the perception, interpretation, and appreciation of beauty';² and that when we consider something beautiful, we also experience a range of emotions which are experienced through all our senses, not just the visual. Our sense of smell, taste, touch, and hearing all contribute to the cognitive process that stimulates our own perception of beauty.

Many people come here to simply see the trees, just think of the autumn colour feast we excitedly await each year! Yet if we broaden our experience to recognise our other senses, there is more to Westonbirt's beauty than meets the eye!

Sensory guides

This year we are hugely excited to be involved in a project that has brought all our senses alive! Alongside partners Sensing Nature and Natural Inclusion, we have recruited four fabulous volunteer Sensory Guides, each of whom are sight impaired. We are collaborating with them to co-create Sensory walks to guide you through the trees and immerse you in a multi-sensory journey. The aim is to facilitate an experience at the arboretum like never before, providing an opportunity to enjoy Westonbirt through a mix of sensory perspectives and foster a deeper sense of connection with nature.

It's a way to enrich our experience of the trees, and it might help dig into the question 'why do I find this place beautiful?'. Perhaps, after one of these walks, you might find that you wander around the arboretum in a new way: close your eyes and what do you hear? Find a diverse range of tree species and feel the different barks. Stop in a glade and inhale through your nose... what is that smell? Is it the vanilla scent of honeysuckle or the candyfloss tree evoking fairground memories? Each of these smells will subconsciously add to your experience, and indeed to a 'vision' of beauty.



If you have joined one of these new guided walks, let us know any new things you experienced at this beautiful place. **We'd love to hear your thoughts: westonbirt@forestryengland.uk**

1. Bell, S.L. (2019) Sensing Nature: Unravelling metanarratives of nature and blindness. In: Atkinson, S. and Hunt, R. (Eds) Geohumanities and Health. Springer Global Perspectives on Health Geography, Chapter 6.

2. www.psychologytoday.com/gb/blog/science-choice/201809/what-makes-something-beautiful



Winter 2020



Spring 2021



We have continued to monitor our healthy ash trees and many of them maintain good tolerance of the disease. This is wonderful to see and gives hope to ash remaining part of a healthy woodland here at Westonbirt as progeny of these tolerant trees continue to cross breed. The botanical collection at Westonbirt is also very important as it continues to support scientific efforts to understand the genetics of the ash species that make some tolerant to this disease.

Chalara ash dieback update

Credit: Johnny Hathaway



As we move towards the next phase of ash removals from within Silk Wood it is a good opportunity to look back at the works already completed and the impact chalara ash dieback has had.

Andy Bryce – Collections Manager, Forestry England

Back in February 2021, over 3,000 chalara infected trees were removed during Phase 1 which was effectively a clear fell of 6.7ha of heavily infected woodlands. A very successful operation was carried out with great care and skill by a specialist contractor; ground damage was left to an absolute minimum and the intricate network of grass paths were preserved.

The areas have been left fallow and over spring and summer, woodland flora sprung up, wildlife continues to find refuge and brambles have gone wild in places;

everything we expected to happen. The timber produced has been sold and the money raised through the sale has gone some way to offset the financial cost of the project so far. The ecological impact however is much more complex to calculate and one we may never truly know.

Working closely with Forest Research we will now ensure the restock of the woodland combines regeneration alongside enrichment planting to help speed up the natural process of replacing the woodland canopy and ensure a diverse species composition. We are also looking at how we can source these plants from Forestry England nurseries which we will begin to plant over the coming few years.

Lessons from the fire wood pile

Ash is renowned for its excellence as firewood. I witnessed first-hand the effect that chalara has had on affected trees. In the picture below, counting rings back from when it was felled in 2020 a marked difference can be seen in 2013 when chalara first affected this tree. Leaf loss reduced photosynthesis, energy production became limited and the tree began to alter how reserves were allocated in order to survive; annual growth was reduced in an attempt to preserve energy to remain alive.



Markings highlight the effect ash dieback has had on the tree since it was first affected in 2013.

The distinctive rings are caused by a difference in the type of wood produced by the tree; the lighter coloured early wood has large diameter thin walled vessels which draw up sap in the spring, kick starting the growing season. The darker latewood has smaller thicker walls making this wood more dense and provides strength to the wood. Not only is chalara killing our ash, it is affecting its mechanical properties also, wood becoming lighter and brittle.

As a woodland user, owner, forester, ecologist or as an end user of ash timber, chalara will continue to have an impact for many years to come.

While the ground lies fallow for a few years, we are busy planning our replanting phase! More details on how you can get involved will follow in due course.

Orange tape was placed ash round trees showing tolerance to the disease.





Life in the forest

As autumn days draw in and winter approaches, the woodland environment changes but life goes on in this fascinating eco system.

The rhinoceros beetle (*Sinodendron cylindricum*) takes its name for obvious reasons.

Although related to stag beetles, at no more than 2cm the rhinoceros beetle is much smaller. The adult beetles feed on tree sap and have a particular liking for beech trees. Females will burrow into rotting wood to lay their eggs whilst the male stands guard at the entrance.



Rhinoceros beetle

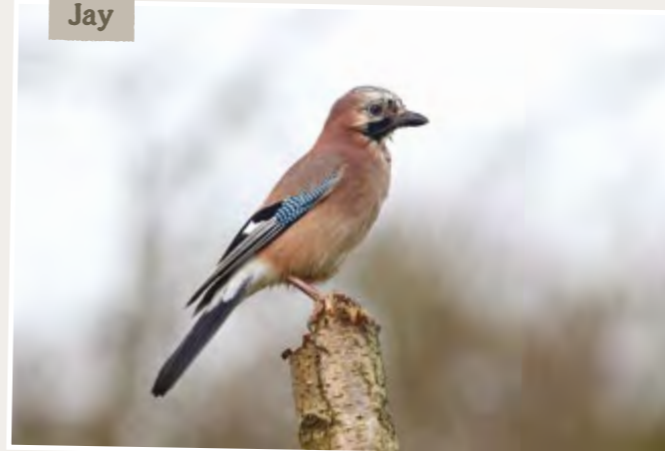
Common shrew



The common shrew (*Sorex araneus*) has a diet of insects, earthworms, slugs and snails.

They don't hibernate but have the amazing ability to shrink their entire body including the brain and skull during the winter to reduce their intake of food. They tend to be solitary, only mixing during the mating season. Young shrews are sometimes observed in a 'caravan' with the mother, each holding the tail of the one in front. Unfortunately for the shrew, they are a popular snack for many woodland predators.

Jay



The jay (*Garrulus glandarius*) is a beautiful bird with a screech-like call although it can also mimic the calls of other birds.

Known for their love of acorns, the jay can often be seen foraging in the autumn. They hide some of their acorns to consume over the winter but often lose track of the location, which of course benefits the spread of the trees. Jays will partner up and breed together for life.



Tardigrade under a microscope

Tardigrades (*Tardigrada*), often referred to as water bears or moss piglets, can often be found in moss.

At just 0.5mm in length they aren't easy to spot but if you have the patience to soak a small lump of moss, wait 20 minutes, squeeze the water into a flat glass dish, let it settle and then examine with a hand lens, you should discover one of the most resilient animals on the planet, surviving in oceans, volcanic mud, Antarctica and rainforests!

Trees and plants communicate with each other through a remarkable network of fungi called mycelia.

This underground network links up the roots of different plants sometimes sharing nutrients between more established trees and younger saplings, passing on information and even conspiring to sabotage unwelcome plants by spreading chemicals through the network. Incredible to think they had a 'wood wide web' well before our Internet came along.



Mycelial cord on dead wood

If you would like to contribute to our woodland seasonal update we would love to hear from you.

Contact magazine@fowa.org.uk

Understanding the challenges of climate change

Our young members are so important, not just to the arboretum but to the future of the planet. Understanding some of the challenges of climate change and the actions we can take to reduce the impact is critical for the future health of the planet.



What does climate mean?

Climate is the weather recorded over many years to see if there are patterns e.g. is it getting hotter, colder, wetter, drier?

Scientists work out the climate by studying the weather over a long time to spot patterns. In the UK you might expect August to be warm and dry but expect January to be cold and wet!

What is climate change and why should we worry?

Climate change is when the usual conditions change over a long period of time.

Global climate change is looking at patterns for the entire Earth, including rising temperatures and sea levels, shrinking glaciers and even changes to the time that flowers and plants bloom!

The Earth's climate has been changing for millions of years but scientists have noticed changes are happening much faster over the last 150 years.

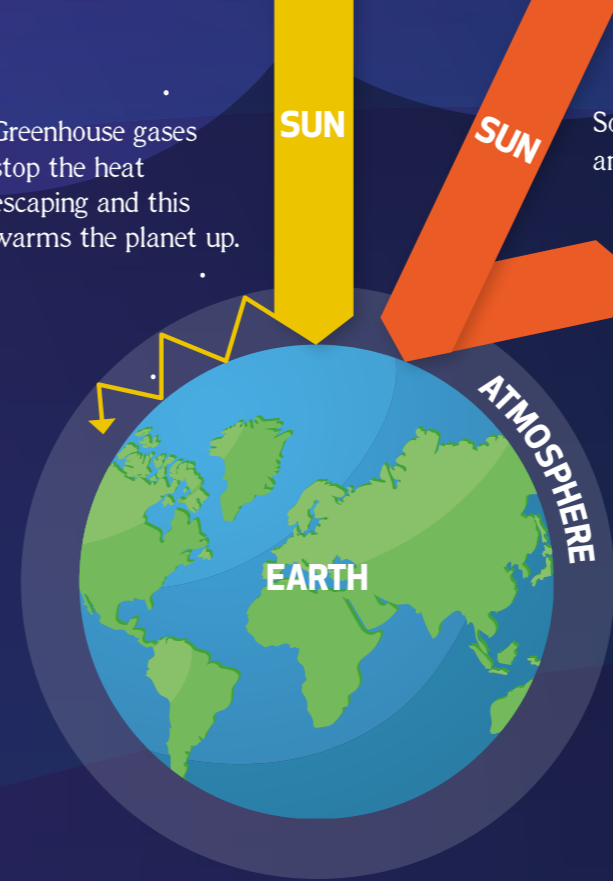
What are world leaders doing about the climate crisis?

The United Nations brings the leaders from many countries together to discuss the climate crisis at a conference called Conference of Parties (COP).

This year the COP will meet for the 26th time in Glasgow (COP26). Over 190 world leaders will aim to come up with plans to tackle the climate emergency.



Greenhouse gases stop the heat escaping and this warms the planet up.



Some of the sunlight hits the Earth and is reflected back into space.

What causes climate change?

Many things can cause the Earth's climate to change but scientists have established that humans have had a big impact on the changes over the last 50-100 years.

Gases, such as carbon dioxide, are released into the atmosphere from human activities that burn fossil fuels, such as driving non-electric cars and powering factories. These gases trap heat in the atmosphere making the Earth warmer, this is called the greenhouse effect.

As the Earth warms up it affects other things like the oceans, wildlife and the air. All these things are connected. It's really important that we try to reduce our impact on the climate to help protect our planet!

What are we doing at Forestry England?

Forestry England is caring for trees and planting new woodlands. Forests help produce cleaner air to breathe, habitats for wildlife and sustainable timber that can be used and replaced.

Growing and using wood helps to tackle the climate crisis. Trees absorb carbon dioxide (a greenhouse gas) and store it as carbon in the wood. Planting new areas of forest helps to lock up more carbon dioxide. Sustainable wood products are also an alternative to fossil-fuel-based materials, like plastic.

We are growing different types of trees that are suited to the changing climate and increased pests and diseases. By planning forests for conditions we expect in 2050 and beyond, we can make sure the nation's forests will continue to thrive in the future.

What can you do to help?

Can you find 10 ways to use less energy in your everyday life?

This can be as simple as switching off the light when you leave a room or walk, where possible, instead of going by car. How many can you come up with?

When you're shopping for wood and paper products, always make sure to look for the FSC® or PEFC logos to know they come from forests, like ours, that are managed sustainably for the future.





▲ Credit: Dave Hughes

Westonbirt Tree Team

“never a dull day at the ‘birt’”



It is always wonderful to hear compliments about the arboretum from visitors and industry peers. As Collection Manager it makes me proud to have a degree of influence in how it all comes together to form the jewel in Forestry England’s crown.

Andy Bryce – Collections Manager, Forestry England

What is astounding is how it's all carried out by a relatively small group of people collectively known as the Tree Team. Alongside myself, Technical Arborists, a Propagator, Dendrologist, Records Officer and Curator make up this happy clan, motivated by maintaining this beautiful corner of Gloucestershire.

There's a phrase used a lot by the Tree Team; “*never a dull day at the ‘birt’*” and it's for good reason. The sheer scale and volume of work that is required every single week of the year is phenomenal. Imagine if you left your garden untouched for a year, what would it look like? Now imagine that extrapolated over 600 acres of botanic garden, woodlands, arboretum, and grasslands all within a Grade 1 Listed landscape. There is always work to be done so we can't rest on our laurels at any point.

The core of our work is the remedial cycle that takes in every single tree and shrub in the collection, with over 15,000 specimen plants the whole cycle from start to finish is aimed to take six years.

In reality the cycle takes us much longer because we cannot dedicate all of our time solely to this cycle of work; a host of other tasks arise throughout the year every year. Managing the wildflower populations and cutting grass is carried out eight months of the year, planting and establishment checks take at least two months in total, storm damage and tree safety work is carried out as and when required but is focussed over the winter months. A cycle of shrub pruning ensures winter interest from species within the genera *Cornus* and *Salix*.

I haven't mentioned yet the stump grinding, nor the machinery servicing, tree inspections, plant health work, woodchip and timber processing, hand weeding, woodland management, path maintenance... the list does go on, and we absolutely love the diversity this brings. By carrying out this work ourselves we build a deep intrinsic knowledge of every corner of the arboretum and that is really important when you're custodians of an important and special place such as Westonbirt.

Then of course there is all the seed collection, plant propagation and collaboration with local, national and worldwide partners on plant conservation, bio-security, future forestry, industry health and safety, career/professional development – yes the Tree Team do all of this too!

With all of this work to be carried out, it is important for us to stop and appreciate our hard work throughout the year and as the seasons change. For many of our visitors, the highlight of the year will soon be upon us as the botanical fireworks display erupts in autumn. For the Tree Team this marks the imminent passing of another year at Westonbirt and as we look forward to what 2022 will bring us.

Pick up a map from the Welcome Building and head to the Tree Management Centre viewing area on Circular Drive to find out more (Map grid ref F16).



Dendrologist verifying specimen trees



Managing the diverse wild flower populations



Updating our robust botanical recording system

news



Volunteer recruitment open day

Saturday 20 November 10am - 1pm

This is an informal event in the Great Oak Hall for anyone who is interested in volunteering at Westonbirt Arboretum. We will have staff and volunteers on-hand to talk to you about our volunteering programme and discuss any current opportunities. If you are visiting the arboretum feel free to pop in to find out more.

forestryengland.uk/westonbirt/volunteering

Tracey manages the Westonbirt Shop



Meet Tracey, our new Retail Manager who brings a wealth of experience to seek out unique and exciting products for you to discover in the Westonbirt Shop.

Don't forget that as a member, you can receive 10% off your purchases when you show your membership card to the Shop Team!

Julia leads our Supporter Services Team



Meet our new Supporter Services Team Leader Julia, who plays a key role ensuring your membership is processed accurately and you have a card to visit.

Having been a member for over seven years, Julia has great insight from a member's viewpoint and knows how important her role is! She can often be found visiting the arboretum at weekends with her family.

Ollie joins the Tree Team



As a charity, we support education to connect people with trees.

As part of this programme we fund placements for student arborists so they can gain hands on work experience in The National Arboretum! This year, Ollie Harris has joined the Tree Team as our latest recruit for the next 12 months.

Rachel joins the crew



Rachel has recently joined the Servicing Team to assist you with your membership queries, processing payments and issuing membership cards.

Rachel has been a member for over five years, regularly walking her four legged Poochon, Kiki, in Silk Wood.

When the cows come home



Our small herd of Galloway cows are back!

Cows create a healthy and varied habitat by using their tongues to pull vegetation into their mouths, so they don't graze too close to the ground. This leaves tufts of grass in which insects can live, helping to maintain a more diverse number of species.

Neil is bringing projects to life



My work as Project Manager at Westonbirt is a truly unique role as I have the privilege of helping to deliver some inspiring capital projects within the arboretum.

I originally studied horticulture at university so working at Westonbirt, a botanical collection feels extremely satisfying. My role encompasses project development through to contract management.

Congratulations to Sandy Fotheringham, Linda Tillotson, Gill Parker, Pat Parsons, Darren Galpin, Ann Farrington, Colin & Karen Falder who successfully completed last edition's tricky crossword!

Farewell to Bev



After almost 15 years with our charity, we said farewell to Bev Starkings at the end of July.

Bev has been instrumental in establishing the membership scheme, ensuring it operates smoothly. We wish Bev all the best in her retirement.

If there's a story you'd like us to feature drop a line to our Editorial Team at magazine@fowa.org.uk

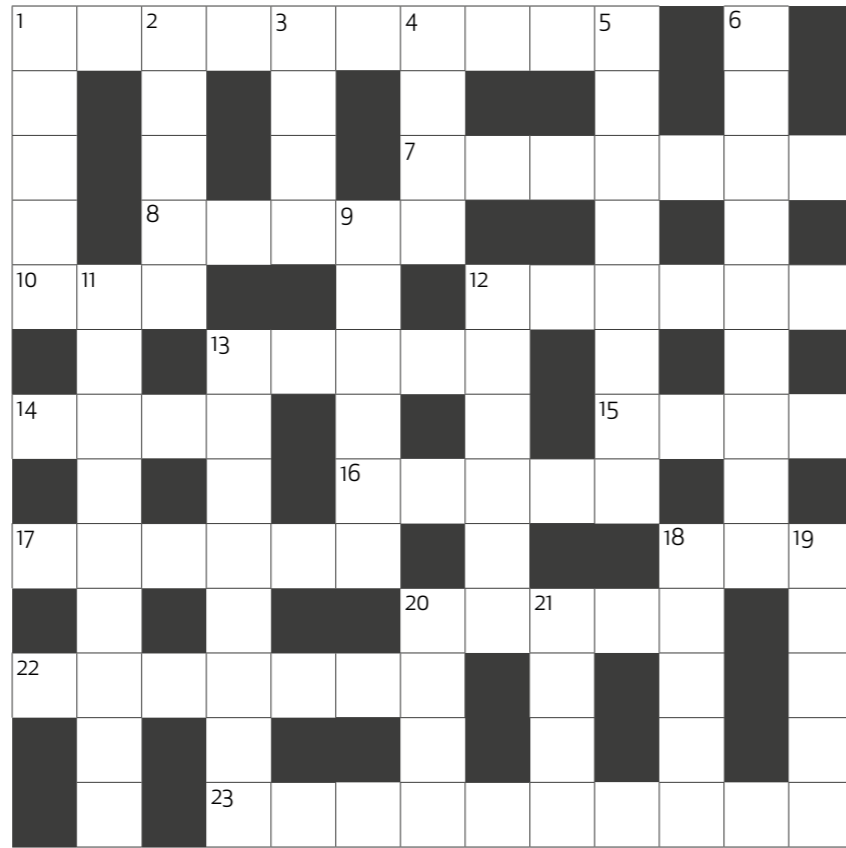
Crossword

As always, our thanks to Roger Gorst for providing clues mainly about trees and some smaller plants with a few additional cryptic clues intended to help.

Get your thinking cap on and email a photo of your completed crossword to magazine@fowa.org.uk to have your name featured in our next magazine!

Across

1. A slow growing Malaysian tree bearing fruit with white juicy segments. **10**
7. A famous beach with Palm trees. **7**
8. Parts of roofs with wooden beams overhanging walls. **5**
10. One of trees planted to strengthen the Navy. **3**
12. A chemical found in green vegetables and in Chester Old Market. **6**
13. South American Palm; with local names including Jelly Palm. **5**
14. Type of butter extracted from *Vitellaria paradoxa* trees in Africa. **4**
15. A small herb with many varieties. One could make a lot of money. **4**
16. They absorb carbon dioxide and produce a little hydrogen. **5**
17. Type of land suitable for trees but normally farmed. **6**
18. Spotted. A tool used in arboriculture. **3**
20. Fungus, e.g. *Saccharomyces cerevisiae*, seen in parts of dry East Anglia. **5**
22. Fruit of evergreen tree, *Persea Americana*. **7**
23. Bread with two wheats, perhaps Keir Ronney mixed? **7-3**



Down

1. Fruit tree with cultivars including Edgehill and Glen, grown in America. **5**
2. A name for *Pauliurus Spina-christi*, small Mediterranean tree, also spotted back in Lake Benton. USA. **5**
3. The King responsible for a *Picea abies* tree in Trafalgar Square each year from 1957 to 1991. **4**
4. New Zealand nectar eating birds, often nesting in Kowhai trees, also seen in Vanuatu Island. **4**
5. An area of London; might need renaming after *Ophiostoma novo-ulmi*. **4.4**
6. Area in Philippines where *Vatica elliptica* trees grow near City of Flowers of same name. **9**
9. Large property, perhaps with trees. **6**
11. Small woods with *Fraxinus* trees. The Welsh sing about one. **3.6**
12. Wood from an *Entandrophragma* tree, used in guitar necks. **6**
13. Apple wood and hickory are said to be good for this. **8**
18. River running through Copperas Wood Nature Reserve. **5**
19. Feature of barks of *Populus tremuloides* and *Eucalyptus pauciflora*. **5**
20. City creating a 'Community Wood' with cycle paths to offset emissions from ring road. **4**
21. Tree with subspecies "Westonbirt Orange". **4**



Revitalise your business meetings



After months of endless virtual meetings and remote working, now is the time to revive your face-to-face contact with colleagues and associates. Where better to do so than in the beautiful surroundings of Westonbirt Arboretum in the comfort of the Great Oak Hall?

Arrange your meeting in this magnificent medieval-style traditional venue, equip to meet your requirements, to reconnect and energise your team in the heart of our 600 acres of trees, fresh air and inspiration.

As well as a flat hire charge, we now also offer a per-delegate rate including catering for smaller groups.

Please visit fowa.org.uk/greatoakhall for details.

For more information and to check availability, contact greatoakhall@fowa.org.uk

Volunteering: the covid journey



So much and yet in many ways so little has happened in the last 12 months. We've been in

and out of lockdowns, had several volunteer restarts whilst some volunteers have been away from their beloved activities for over a year. Our volunteers are the lifeblood of Westonbirt activities, there is so much we simply couldn't achieve without them! It's been tough without them and we've missed them terribly but from June we were able to start welcoming back more of our volunteer groups.

Claire Bradley – Volunteer Coordinator, Forestry England

With around 270 volunteers operating in over 20 roles, it's been quite a logistical challenge restarting volunteering activities. I suspect our volunteers have found it equally challenging to keep up with the changing scenarios and protocols of working within covid guidelines. Between us we have embraced new technologies and faced up to the sad reality that any large group face-to-face training was put on pause. Whilst some adaptations have been a great success, others have experienced a few teething problems but thank you everyone for going with the flow and well done for seeing it through!

We have had to separate volunteer teams into group hubs or bubbles. With limited building space we erected three marquees to house our bubbles for checking in and out and providing welfare facilities.

Volunteer Hubs



Tree Team Hub: to cater for our phenology, propagation, Tree Team, tree label/survey and flora and fauna groups.



Welcome Building Hub: to house our Estates Team, Welcome Team, shuttle drivers and Great Oak Hall stewards.



Keepers Cottage Hub: our largest marquee for our guides, Community Team, Learning Team, Evaluation Team and photographers.

With such a diverse range of activities, every team has its own protocols for working in a covid safe manner. Putting together the refresh training and restart briefings to get our bubbles working and volunteers back in action has been a mammoth task for the team supervisors. But thanks to a great effort all round we can now:

Offer public guided walks again.

Always be on hand to welcome and inform our visitors

and assist their access to the arboretum in the form of the on-site shuttle.



Give the arboretum a good tidy and brush up – above and beyond the day-to-day arboretum management.

Ensure all our specimens are labelled correctly.

Give additional support to our community, school groups and family events.

Continue with our scientific recordings of the arboretum flora, fauna and seasonal changes.

This is a very broad view of just some of the ways in which our volunteers bring so much to Westonbirt Arboretum but, needless to say, we are absolutely thrilled to have them back. Their passion for the arboretum is reflected in every visitor's experience when they come to enjoy a visit.

It's been a long haul, but I think we made it. Thank you to all the Westonbirt teams and especially our volunteers for their support and patience.





 2020/21: time well invested
at Westonbirt Woodworks

Early in 2020, as the pandemic took hold, we had to cancel half the bookings we had made for our chair making courses and abandon plans for the other courses we had planned to run.

Paul Hayden – Westonbirt Woodworks

So, all through the glorious spring of 2020 I was able to come in to work and do what I love, while Harry (my hairy little hound) and I had the arboretum pretty much to ourselves. I made chairs and began some of the tasks the arboretum needed.



Harry



Participants learn traditional green woodworking techniques to make their chair.

Most people will now have seen the safety-glass screen that separates the arrival windows in the Welcome Building. That is one of ours, and we are happy to be replacing and repairing the light posts around the car park and Welcome Building with oak posts that have been grown, milled, made and wired up here at Westonbirt Woodworks.

We are learning to use the Sawmill too. It is a complicated and brilliant machine. It is computer programmable and, to be honest, I am not brilliant with my phone so a machine of this complexity has been a challenge. I have been joined at the Woodworks by my son, Josh, who is more of a natural with computers than I am. He's already making it look easy. He can use the hydraulic lifters, clamps, rotators and rollers with which it is fitted to get logs milled to perfection.

We were tasked to turn a giant cedar butt into timber for a roof in the Tree Teams propagation area alongside cutting tree planting stakes for the netting that protects young trees. The stakes must be a specific size to fit into the kit that's used, and they need to be made of something that won't rot. So that meant using larch in this case. We cut a few hundred and have more to make as they get through a few here!

By August last year we were able to get our Chair Making courses running again. We had to buy quite a lot of extra tools in order to avoid sharing, and we reorganised things to create individual workstations for each attendee which made things a bit different, but we were fortunate that on the first post pandemic course we had two Doctors who had been on the course before. With a lot of planning, and with their help, we were able to establish protocols to keep everyone safe without losing too much of the relaxed and friendly feel that our courses normally have. The main complaint was that we could no longer provide the unlimited tea and coffee, cake, sausages and baked potatoes for which the course is famous.

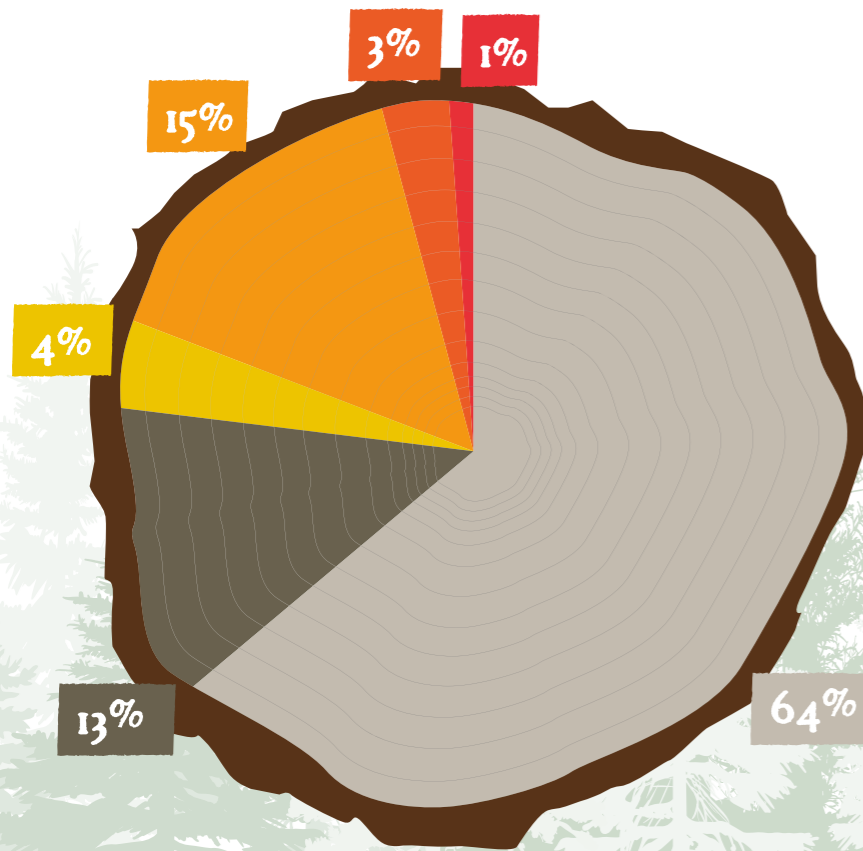
This year we have a full complement of twelve chair making courses and, of course we will be selling our Christmas trees again through December. Come on down to see us!

Its onwards and upwards at the Woodworks. Soon we will be receiving the cutting lists for the Community Shelter and other projects that Westonbirt has planned. We can't wait.

Visit westonbirtwoodworks.co.uk for more information on courses run by Westonbirt Woodworks.

Financial overview

Friends of Westonbirt Arboretum (FoWA)



Income

- Membership subscriptions
- Gift Aid
- Donations
- Retail shop
- Government grants
- Other income

Overall Position:

Overall FoWA made a surplus of **£296k** in 2020.

Income:

Overall Income for 2020: **£1.6m**

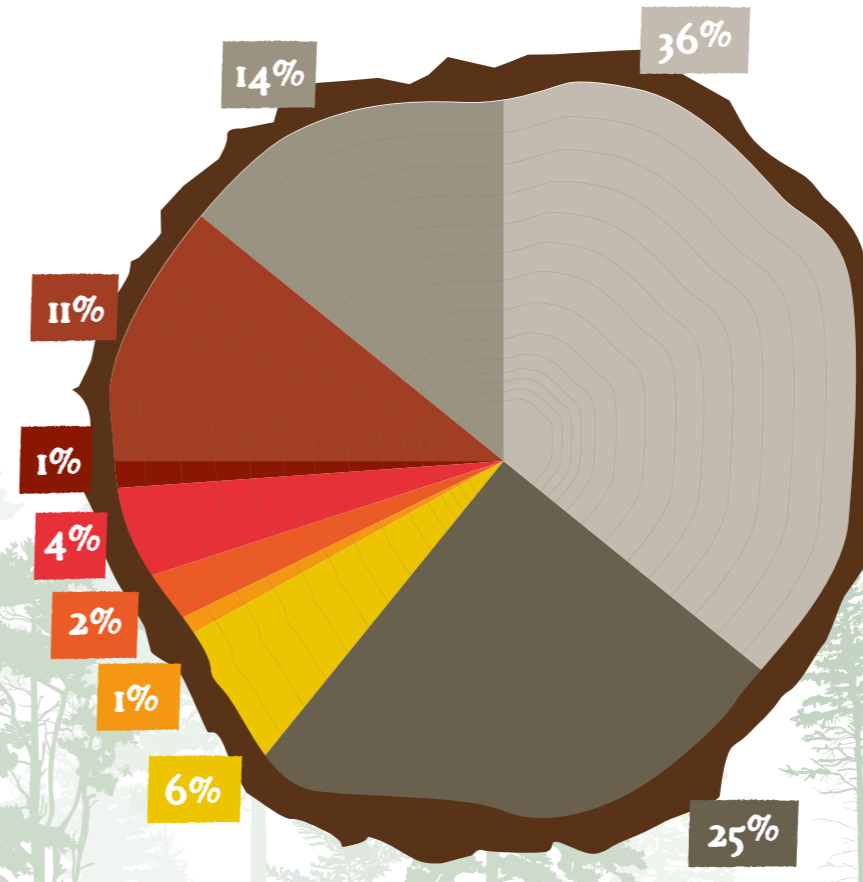
Membership Income: £1m

Plus Gift Aid: £0.2m

Overall membership income including Gift Aid: £1.2m

Membership income accounts for 64% of FoWA's total income, rising to 77% if Gift Aid is included.

Gift Aid is a really important source of income for the charity and helps us in our aim to support the arboretum's development.



Expenditure

- Arboretum Access Rights Payment (AARP)
- Staff costs
- Retail staff costs
- Grants
- Membership activities
- Magazine production costs
- Other costs
- Support costs
- Retail costs

Expenditure:

Overall expenditure: **£1.3m**

The largest item of expenditure for the charity is the Arboretum Access Rights Payment (AARP) to Forestry England. This accounts for 36% of the charity's annual expenditure. This payment enables our members to access the arboretum throughout the year.

Grants

Grant expenditure to Forestry England was relatively low in 2020 due to the impact of COVID-19 and delays to various projects. The charity has ring-fenced funding of £234k to be spent in future years to support various projects across the arboretum, including improved signage, car parking facilities and funds for the new Quarantine House, Community Shelter and Coppice Shelter.

Find out more at fowa.org.uk/agm

STIHL



AKI
SYSTEM

BATTERY POWER. BY STIHL. READY FOR ANY CHALLENGE.

AKI
SYSTEM



THE STIHL AK SYSTEM. CORDLESS TOOLS FOR ALL GARDEN TASKS.

The STIHL AK System is a flexible range of power tools, designed to take on any challenge in your garden.

Using interchangeable Lithium-Ion batteries, these tools have long working times and are designed to be easy to use, lightweight and quiet without compromising on performance.

That's real battery power. Made by STIHL.

AVAILABLE FROM APPROVED STIHL DEALERS, SELECTED GARDEN CENTRES AND BY VISITING [SHOP.STIHL.CO.UK](https://shop.stihl.co.uk)

Friends of Westonbirt Arboretum Team

Chief Executive
Mike Coe

**Head of
Supporter Engagement**
Jane Shute

**Supporter Services
Team Leader**
Julia Bartlett

**Marketing &
Communications Officer**
Jo Murray

**Supporter
Services Coordinator**
Kelly Hough

**Supporter
Services Coordinator**
Rachel Raggatt

Finance Manager
Emma Frost

Finance Officer
Maureen Nisbet

Retail Manager
Tracey Burgoyne

Business Officer
Lorna Smith

For membership enquiries:
membership@fowa.org.uk

Patrons
HRH The Duchess of Cornwall
Giles Coode-Adams OBE
Sir Henry Elwes KCVO
Hon Beth Rothschild
Sir Crispin Tickell GCMG, KCVO

President
Christopher Brickell CBE

Vice Presidents
Roger Busby CBE

Trustees
Mike Mintram (Chair)
Beth Bottrill
Gavin Grant
Martin Green
Veronica Morris
John Parker
Martyn Smith
Rachel Walker

Arboretum opening times

9am–5pm (last paid entry March – Nov 4.30pm)
(Dec – Feb 4pm) closed Christmas Day

Please pre-book your visit at
fowa.org.uk/pre-book

General Enquiries Monday–Friday

Tel: 0300 067 4890
westonbirt@forestryengland.uk

Learning Centre

The Learning and Participation Team offers a wide range of fun, hands-on programmes
Tel: 0300 067 4856

Mobility Scooter Reservations

Book in advance, collect from Welcome Building
forestryengland.uk/westonbirt

Volunteering

Tel: 0300 067 4853
volunteer.westonbirt@forestryengland.uk

Westonbirt Shop

Open every day 9.30am – 5pm
Tel: 01666 880 787
retail@fowa.org.uk

Restaurant & Pantry

Open 9.30am – 4pm

Smokehouse

Open 12pm – 3pm during weekends, bank holidays and at varying times in school holidays
Closed Christmas and New Year's Day
Tel: 01666 880 787

**Westonbirt, The National Arboretum, Tetbury,
Gloucestershire GL8 8QS**

WESTONBIRT ARBORETUM'S
**ENCHANTED
CHRISTMAS**

**SEARCH FOR THE
LOST REINDEER**

**HALF PRICE
FRIDAYS**
for members of the
Friends of Westonbirt
Arboretum!

26 NOV - 22 DEC
Open on selected evenings

**Weather the storm to help to reunite
Father Christmas with his lost reindeer and
experience mesmerising light displays and
stunning spectacles along the way!**



forestryengland.uk/Westonbirt/enchanted-christmas

Box office: 0300 068 0400



Forestry England